



# Floor Doors + Hatches

08 3483 | PRODUCT CATALOG

 **babcockdavis**

Great Products.  
Better Partners.



Great Products.  
Better Partners.



## ROOF HATCH + SMOKE VENT

07 7200



## FALL PROTECTION

05 5213 / 07 7200



## ACCESS DOORS

08 3100



## STAIR TREADS + NOSINGS

05 5000



## ENTRANCE MATS + GRILLES

12 4813 / 12 48 16



## WALL + DOOR PROTECTION

10 2600



# FLOOR DOORS + HATCHES

08 3483



# Access where it matters

## Floor Doors + Hatches

### **FIRE-RATED** 5-6

Diamond Tread	5
1/8" Pan	6

### **DRAINABLE** 7-8

300psf Pedestrian	7
H2O Vehicular	8

### **NON-DRAINABLE** 9-10

300psf Pedestrian	9
H2O Vehicular	10
1" Pan Architectural	11
1/8" Pan Architectural	12

### **RETROFIT** 13-14

Existing Opening	13
Surface Mount	14

### **WELL HATCHES** 15

Water Tight Well Hatch	15
------------------------	----

### **FALL PROTECTION** 16-18

Safety Grating	16
Safety Nets	16
Safety Railing	17
Safety Post	17
Safety Chains	18

## Options

Material	19
Frame	19
Finish + Color	19
Latch + Lock	19

More than a source for your  
commercial building products...

# A Partnership

Dear Partner,

Thank you for your continued confidence in Babcock-Davis. On behalf of the entire company, I can tell you that we are motivated and inspired to from our partnership. Working with you to deliver commercial building products and services that exceed your expectations is our top priority.

For over 100 years, we have remained dedicated to building and designing the highest quality commercial building products. Our product offering and manufacturing capabilities have grown significantly over the years thanks to the quality commitment of our many hard working employees in Minnesota. We proudly stand behind every product that we ship out every day and around the world.

Sourcing commercial building products is never as simple as it seems. This is particularly true when it comes to the type of specialty and architectural building products that we supply. It takes a collaborative effort of resources and information to get the job done right. We understand all the complexities and time sensitivities involved. This is why we have built such a strong network of people and processes to better serve all of you, our partners. We do so with flexibility and nimbleness that fit your objectives-not ours.

We are excited for the future and the opportunity to work with you and to continue to exceed your expectations. You have our commitment that we will work hard every day to help you succeed.

If there is anything that we can do to improve our service to you, we will listen.

Sincerely,



Sue W. Thomas | CHIEF EXECUTIVE OFFICER

# Fire-Rated

## DIAMOND TREAD FLOOR DOOR

Babcock-Davis' Diamond Tread Floor Door is designed to contain fire from penetrating through the opening. Available with 2- or 3-hour fire-rating options, this floor door is designed for pedestrian traffic loads.



### FEATURES

**BOLT-IN INSTALLATION** Available with a bolt-in option for retrofit or drop-in installations.

**FIRE-RATED** Tested to NFPA 288, this floor door is Warrick-Hersey labeled with 2- or 3-hour fire-rating with a maximum temperature rise to 250°F.

### DETAILS

**LOAD** 300 psf live load

**MATERIAL** Aluminum: 1/4 inch, mill finish with gray primer on exterior frame

**COVER** Diamond tread plate

**FIRE-RATING** 2- or 3-Hour

**FRAME** Angled Frame

### INSTALLATION

- Cast-In: 1/4 inch by 1 inch by 4 inch anchor straps welded for concrete pour
- Bolt-in: 3/8 inch diameter bolt holes

**SPRING** Gas spring, Type 316 Stainless Steel

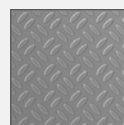
**HINGES** Heavy-duty Type 316 Stainless Steel butt hinge

**LATCH** Slam latch, Type 316 Stainless Steel, with inside pull release cable, includes removable 5/16 inch steel square "L" handle and threaded plug

**COMPLIANCE** NFPA 288

**OPTIONS** Self-closing mechanism automatically closes door at 165°F in event of fire, dampers for slow opening

### MATERIALS



Aluminum

### INSTALLATION



Cast-in



Bolt-in

### ORDER GUIDE

BASE	RATING	WIDTH	X	LENGTH	COVER	INSTALL
<b>BFC</b>			<b>X</b>			-
	<b>RM</b> 2-Hour	Standard Sizes (W x L)			<b>SC</b> Self-Closing Mechanism	<b>A</b> Anchor
	<b>CM</b> 3-Hour	24" x 24"	36" x 36"		<b>W</b> Wood Frame Install	<b>B</b> Bolt-in
		30" x 30"	42" x 42"			
		30" x 36"				

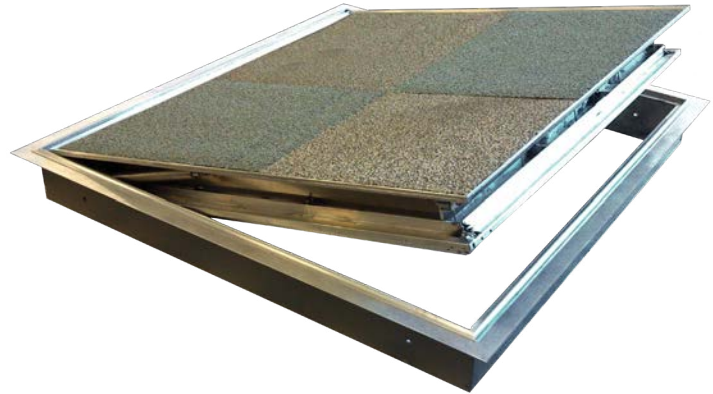
Additional sizes available, call for more information.



# Fire-Rated 1/8 Inch Pan

## ARCHITECTURAL FLOOR DOOR

Babcock-Davis' Fire-Rated Floor Door is designed to contain a fire from penetrating through the opening. This floor door is reinforced for pedestrian traffic loads and features a pan that accepts carpet or vinyl tile. Interior applications only.



### FEATURES

**MINIMAL SIGHT LINE** The recessed design allows for 1/8 VCT flooring infill to seamlessly integrate with the surrounding area.

**FIRE-RATED** Tested to NFPA 288, this floor door is Warnock-Hersey labeled with 2- or 3-hour fire-rating with a maximum temperature rise to 250°F.



### DETAILS

**LOAD** 300 psf live load

**MATERIAL** Aluminum: 1/4 inch, mill finish with gray primer on exterior frame

**COVER** 1/8 inch pan recess for carpet or tile

**FIRE-RATING** 2- or 3-Hour

**FRAME** Extruded Aluminum Angle

#### INSTALLATION

- Cast In: 1/4 inch by 1 inch by 4 inch anchor straps welded for concrete pour.
- Bolt-In: 3/8 inch diameter bolt holes

**SPRING** Gas spring, Type 316 Stainless Steel

**HINGES** Heavy-duty Type 316 Stainless Steel butt hinge

**LATCH** Slam latch, Type 316 Stainless Steel, with inside pull release cable, includes removable 5/16 inch steel square "L" handle and threaded plug

**COMPLIANCE** NFPA 288

**OPTIONS** Self-closing mechanism automatically closes door at 165°F in event of fire, dampers for slow opening

### MATERIALS



Aluminum

### INSTALLATION



Cast-in



Bolt-in

### ORDER GUIDE

BASE	RATING	WIDTH	X	LENGTH	COVER	INSTALL
<b>BFT</b>			<b>X</b>			-
	<b>RM</b> 2-Hour	Standard Sizes (W x L)			<b>SC</b> Self-Closing Mechanism	<b>A</b> Anchor
	<b>CM</b> 3-Hour	24" x 24"	36" x 36"		<b>W</b> Wood Frame Install	<b>B</b> Bolt-in
		30" x 30"	42" x 42"			
		30" x 36"				

# Drainable

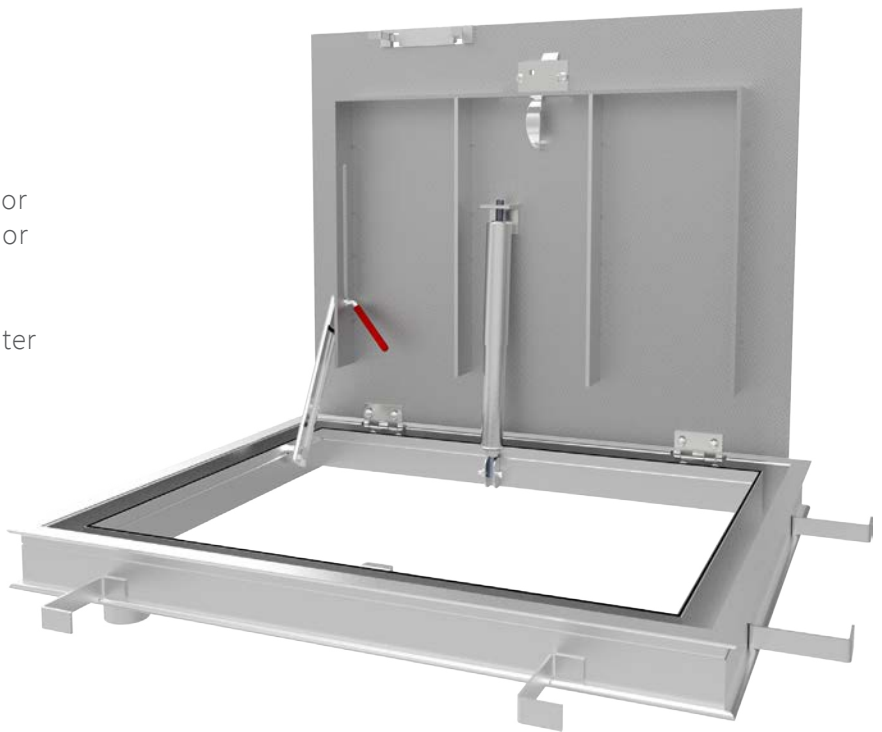
## FLOOR DOOR, 300PSF

Babcock-Davis' Pedestrian Drainable Floor Door is intended for standard duty exterior or high moisture areas when liquid flow into the door is a concern. The frame is constructed with a gutter channel for water runoff into a drainage system.

### FEATURES

**PEDESTRIAN LOAD** Designed for standard duty loads and tested up to 300psf live load.

**LIQUID REMOVAL** Constructed with a gutter channel frame and drain hole for liquid removal.



### DETAILS

**LOAD** 300 psf live load

#### MATERIAL

- Aluminum: 1/4 inch, mill finish with gray primer on exterior frame
- Steel: 3/16 inch, primed gray powder coat
- Stainless Steel: 3/16 inch, Type 304 or 316

**COVER** Diamond tread plate

**FRAME** Formed gutter frame with a 1-1/2 inch drain coupling welded under frame for pipe connection

**INSTALLATION** Cast-In: 1/4 inch by 1 inch by 4 inch anchor straps welded for concrete pour

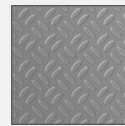
**SPRING** Coil type 17-7 Stainless Steel enclosed in Type 316 Stainless Steel telescopic tubes

**HINGES** Heavy duty Type 316 Stainless Steel

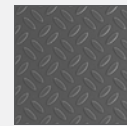
**HOLD OPEN ARM** Type 316 Stainless Steel automatic hold open arm locks cover in open position

**LATCH** Slam latch Type 316 Stainless Steel with inside lever handle, includes removable 5/16 inch steel square "L" handle and threaded plug

### MATERIALS



Aluminum

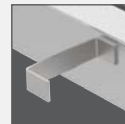


Primed Steel



Stainless Steel

### INSTALLATION



Cast-in

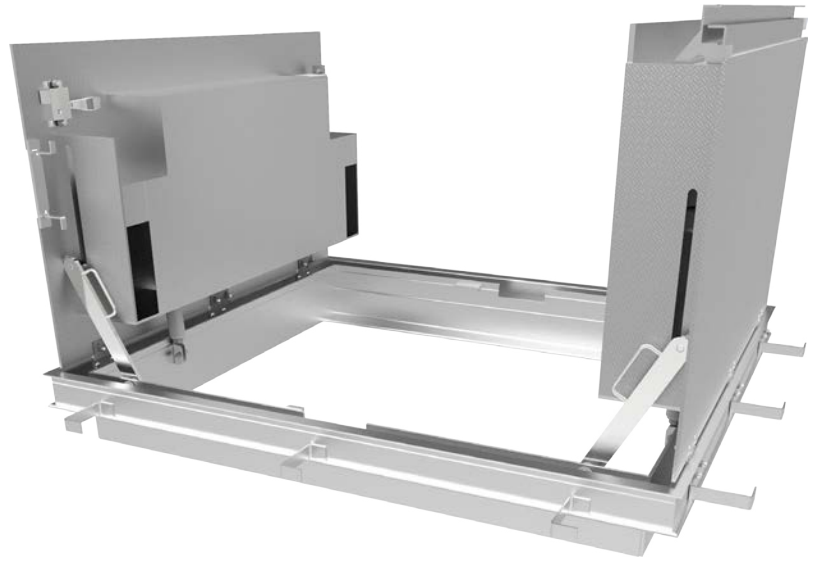
### ORDER GUIDE

MODEL	MATERIAL	WIDTH	X	LENGTH	COVER	OPTIONS
BFDDP			X			AL -
	<b>A</b> 1/4" Aluminum	Standard Sizes (W x L)			<b>S</b> Single Door	Locks Finishes Gaskets Operation Safety Skirting Other
	<b>P</b> 3/16" Steel, Primed	Single Door		Double Door	<b>D</b> Double Door	
	<b>S</b> 3/16" T304 Stainless Steel	24" x 24"		48" x 48"		
	<b>V</b> 3/16" T316 Stainless Steel	30" x 36"		48" x 72"		
		36" x 36"		60" x 60"		
		42" x 42"				

# Drainable

## FLOOR DOOR, H20

The H20 Drainable Floor Door is designed for infrequent, off street traffic in exterior or high moisture areas when liquid flow into the door is a concern. The frame is constructed with a gutter channel for water runoff into a drainage system.



### FEATURES

**VEHICLE LOAD** Designed for exterior/wet environments and tested for H20 wheel load for infrequent, off-street traffic.

**DRAINABLE FRAME** Constructed with a gutter channel frame and drain hole for liquid removal.

### DETAILS

**LOAD** H20 wheel load

#### MATERIAL

- Aluminum: 1/4 inch, mill finish with gray primer on exterior frame
- Steel: 3/16 inch, primed gray powder coat
- Stainless Steel: 3/16 inch, Type 304 or 316

**COVER** Diamond tread plate

**FRAME** Formed gutter frame with a 1-1/2 inch drain coupling welded under frame for pipe connection for water runoff

**INSTALLATION** Cast-In: 1/4 inch by 1 inch by 4 inch anchor straps welded for concrete pour

**SPRING** Coil type 17-7 Stainless Steel enclosed in Type 316 Stainless Steel telescopic tubes

**HINGES** Heavy duty Type 316 Stainless Steel

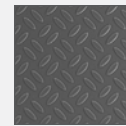
**HOLD OPEN ARM** Type 316 Stainless Steel automatic hold open arm locks cover in open position

**LATCH** Slam latch Type 316 Stainless Steel with inside lever handle, includes removable 5/16 inch steel square "L" handle and threaded plug

### MATERIALS



Aluminum



Primed Steel



Stainless Steel

### INSTALLATION



Cast-in

### ORDER GUIDE

MODEL	MATERIAL	WIDTH	X	LENGTH	COVER	OPTIONS
<b>BFDDH</b>			<b>X</b>			<b>AL</b> -
	<b>A</b> 1/4" Aluminum <b>P</b> 3/16" Steel, Primed <b>S</b> 3/16" Stainless Steel, Type 304 <b>V</b> 3/16" Stainless Steel, Type 316	<b>Standard Sizes (W x L)</b> Single Door 24" x 24" 30" x 36" 36" x 36" 42" x 42"		Double Door 48" x 48" 48" x 72" 60" x 60"	<b>S</b> Single Door <b>D</b> Double Door	Locks Finishes Gaskets Operation Safety Skirting Other



# Non-Drainable

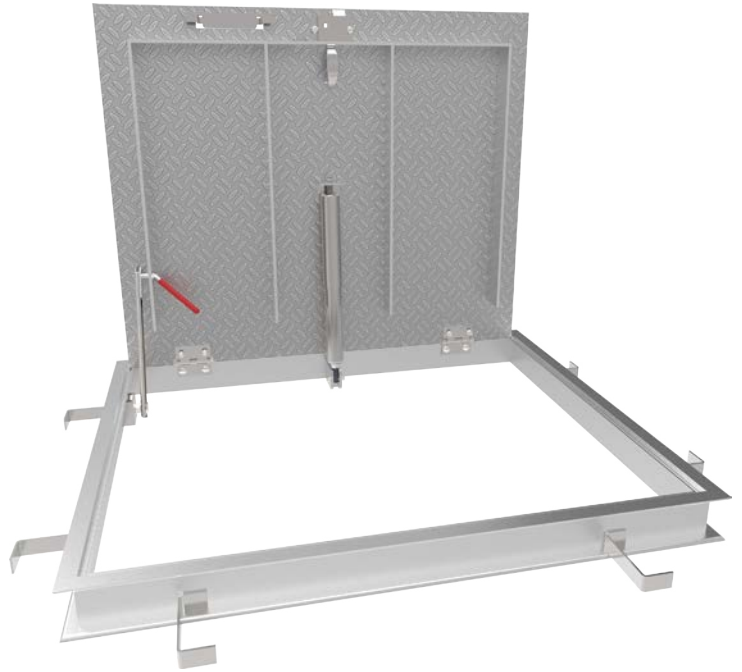
## FLOOR DOOR, 300PSF

Babcock-Davis' Pedestrian Floor Door is designed for standard-duty load and provides a flush installation for new concrete applications. Ideal use for utility and general building applications where water infiltration is not a concern.

### FEATURES

**PEDESTRIAN LOAD** Designed for standard duty loads and tested up to 300psf live load.

**NEW CONCRETE APPLICATION** Cast-in anchor straps are welded onto the angle frame for new concrete construction.



### DETAILS

**LOAD** 300 psf live load

**MATERIAL** Aluminum: 1/4 inch, mill finish with gray primer on exterior frame

**COVER** Diamond tread plate

**FRAME** Angle with channel on hinge side only

**INSTALLATION** Cast-In: 1/4 inch by 1 inch by 4 inch anchor straps welded for concrete pour

**SPRING** Coil type 17-7 Stainless Steel, enclosed in Type 316 Stainless Steel telescopic tubes

**HINGES** Heavy duty Type 316 Stainless Steel

**HOLD OPEN ARM** Type 316 Stainless Steel automatic hold open arm locks cover in open position

**LATCH** Slam latch Type 316 Stainless Steel with inside lever handle, includes removable 5/16 inch steel square "L" handle and threaded plug

### MATERIALS

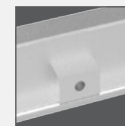


Aluminum

### INSTALLATION



Cast-in



Bolt-in

### ORDER GUIDE

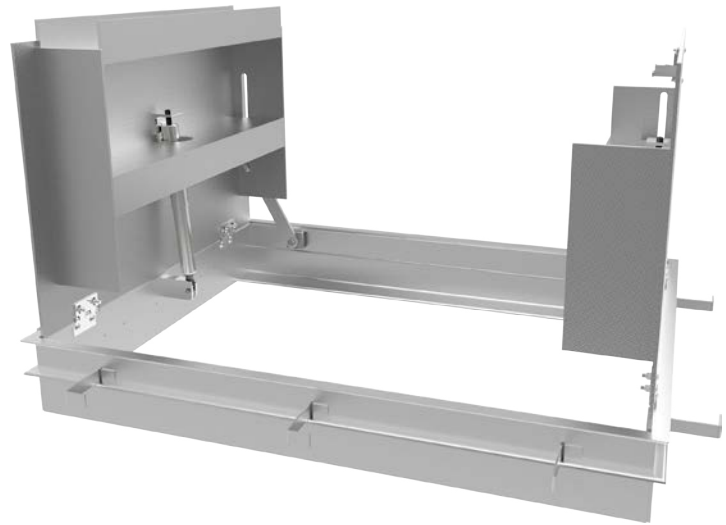
MODEL	WIDTH	X	LENGTH	COVER	AL	-	OPTIONS
BFDNPA		X			AL	-	
	Standard Sizes (W x L)			S Single Leaf			Locks Finishes Gaskets Operation Safety Skirting Other
	Single Leaf	Double Leaf		D Double Leaf			
	24" x 24"	48" x 48"					
	30" x 36"	48" x 72"					
	36" x 36"	60" x 60"					
	42" x 42"						

Additional sizes available, call for more information.

# Non-Drainable

## FLOOR DOOR, H20

The H20 Floor Door is designed for infrequent, light duty, off street traffic in areas where water infiltration and moisture is not a concern. Designed with a flush installation for new concrete applications.



### FEATURES

**VEHICLE LOAD** Constructed with substantial structural beams in the cover to support a H20 vehicle load.

**STEEL OPTION** Optional 3/16 inch steel for added strength and durability. Standard finish of primed gray powder coat.

### DETAILS

**LOAD** H20 wheel load

**MATERIAL**

- Aluminum: 1/4 inch, mill finish with gray primer on exterior frame

**COVER** Diamond tread plate

**FRAME** Angle

**INSTALLATION** Cast-In: 1/4 inch by 1 inch by 4 inch anchor straps welded for concrete pour

**SPRING** Coil type 17-7 Stainless Steel enclosed in Type 316 Stainless Steel telescopic tubes

**HINGES** Heavy duty Type 316 Stainless Steel

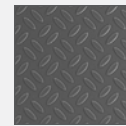
**HOLD OPEN ARM** Type 316 Stainless Steel automatic hold open arm locks cover in open position

**LATCH** Slam latch Type 316 Stainless Steel with inside lever handle, includes removable 5/16 inch steel square "L" handle and threaded plug

### MATERIALS



Aluminum



Primed Steel



Stainless Steel

### INSTALLATION



Cast-in

### ORDER GUIDE

MODEL	WIDTH	X	LENGTH	COVER	OPTIONS
<b>BFDNHA</b>		<b>X</b>			<b>AL</b> -
	Standard Sizes (W x L)			<b>S</b> Single Door <b>D</b> Double Door	Locks Finishes Gaskets Operation Safety Skirting Other
	Single Leaf	Double Leaf			
	24" x 24"	48" x 48"			
	30" x 36"	48" x 72"			
	36" x 36"	60" x 60"			
	42" x 42"				

# 1 Inch Pan

## ARCHITECTURAL FLOOR DOOR

Babcock-Davis' Architectural Recessed Floor Door is engineered with a recess to allow for ceramic tile or concrete flooring. This design preserves the architectural aesthetics while maintaining a minimal sight line.

### FEATURES

**MINIMAL SIGHT LINE** The 1/8 inch profile around the pan allows the door to seamlessly integrate with the surrounding area.

**VERSATILE MOUNTING** Engineered for either cast-in or bolt-in installation with a versatile frame design. Cast-in with the attachable bolts or bolt holes in the frame for easy mounting.



### DETAILS

**LOAD** 300psf live load

#### MATERIAL

- Aluminum: 1/4 inch, mill finish with gray primer on exterior frame

**COVER** Recessed for 1 inch flooring infill

**FRAME** Extruded with channel for anchor bolt

#### INSTALLATION

- Cast In: 6 inch anchor bolt
- Bolt-In: 3/8 inch diameter bolt holes

**SPRING** Gas spring with integrated hold open arm

**HINGES** Nikle plated concealed hinge

**HOLD OPEN ARM** Integrated into spring

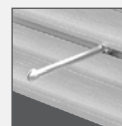
**LATCH** Slam latch Type 316 Stainless Steel with inside lever handle, includes removable 5/16 inch steel square "L" handle and threaded plug

### MATERIALS

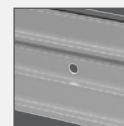


Aluminum

### INSTALLATION



Cast-in



Bolt-in

### ORDER GUIDE

MODEL	WIDTH	X	LENGTH	COVER	INSTALL	OPTIONS	
<b>BFDPPA</b>		<b>X</b>				<b>L</b>	<b>-</b>
	Standard Sizes (W x L) 24" x 24" 30" x 36" 36" x 36"	42" x 42" 48" x 48"		<b>S</b> Single Door	<b>A</b> Anchor <b>B</b> Bolt-in		Locks

# 1/8 Inch Pan

## ARCHITECTURAL FLOOR DOOR

Babcock-Davis' Architectural Recessed Floor Door is engineered with a recess to allow for 1/8 inch VCT flooring infill. This design preserves the architectural aesthetics while maintaining a minimal sight line.



### FEATURES

**MINIMAL SIGHT LINE** The recessed design allows for 1/8 inch VCT flooring infill to seamlessly integrate with the surrounding area.

**STEEL OPTION** Optional 3/16 inch steel for added strength and durability. Standard finish of primed gray powder coat.

### DETAILS

**LOAD** 300psf live load

#### MATERIAL

- Aluminum: 1/4 inch, mill finish with gray primer on exterior frame
- Steel: 3/16 inch, primed gray powder coat

**COVER** Recessed for 1/8 inch flooring infill

**FRAME** Angle frame with formed channel frame hinge-side only

#### INSTALLATION

- Cast-In: 1/4 inch by 1 inch by 4 inch anchor straps welded for concrete pour
- Bolt-In: 3/8 inch diameter bolt holes

**SPRING** Coil type 17-7 Stainless Steel enclosed in Type 316 Stainless Steel telescopic tubes

**HINGES** Heavy duty Type 316 Stainless Steel

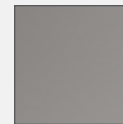
**HOLD OPEN ARM** Type 316 Stainless Steel automatic hold open arm locks cover in open position

**LATCH** Slam latch Type 316 Stainless Steel with inside lever handle, includes removable 5/16 inch steel square "L" handle and threaded plug

### MATERIALS



Aluminum



Primed Steel

### INSTALLATION



Cast-in



Bolt-in

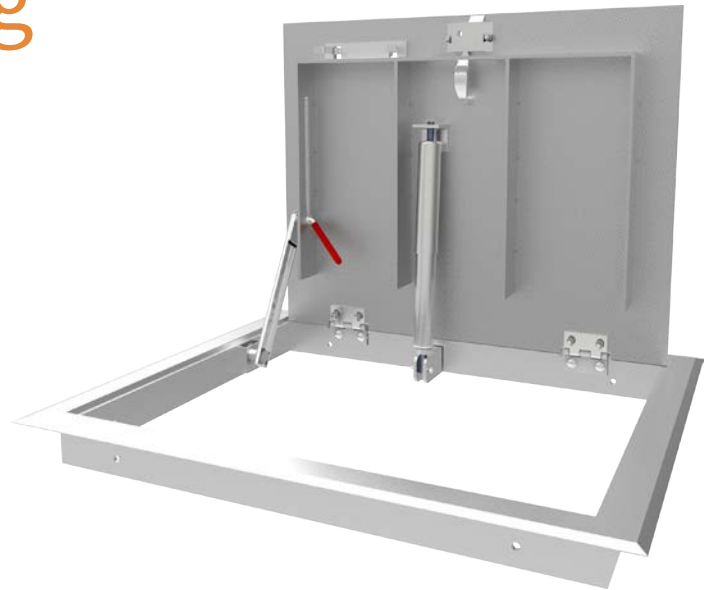
### ORDER GUIDE

MODEL	MATERIAL	WIDTH	X	LENGTH	COVER	INSTALL	OPTIONS		
<b>BFDRP</b>			<b>X</b>				<b>L</b>	<b>-</b>	
	<b>A</b> 1/4" Aluminum <b>P</b> 3/16" Steel, Primed	<b>Standard Sizes (W x L)</b> Single Door 24" x 24" 30" x 36" 36" x 36" 42" x 42"		Double Door 48" x 48" 48" x 72" 60" x 60"	<b>S</b> Single Door <b>D</b> Double Door	<b>A</b> Anchor <b>B</b> Bolt-in			Locks Finishes Gaskets Operation Safety Skirting Other

# Existing Opening

## FLOOR DOOR, 300PSF

The Existing Opening Floor Door is designed for retrofit applications and is constructed with an angle frame. While providing a quality, economical option this is ideal for areas where water or moisture intrusion is not a concern.



### FEATURES

**PEDESTRIAN LOAD** Designed for standard duty loads and tested up to 300psf live load in interior areas.

**MATERIAL OPTIONS** Upgrade the material to steel for added strength and durability or stainless steel for areas where corrosion is a concern.

### DETAILS

**LOAD** 300 psf live load

#### MATERIAL

- Aluminum: 1/4 inch, mill finish with gray primer on exterior frame
- Steel: 3/16 inch, primed gray powder coat
- Stainless Steel: 3/16 inch, Type 304 or 316

**COVER** Diamond tread plate

**FRAME** Angle

**INSTALLATION** Bolt-in: bolt holes, 3/8 inch diameter for drop in

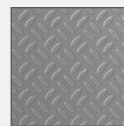
**SPRING** Coil type 17-7 Stainless Steel, enclosed in Type 316 Stainless Steel telescopic tubes

**HINGES** Heavy duty Type 316 Stainless Steel

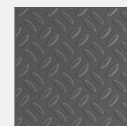
**HOLD OPEN ARM** Type 316 Stainless Steel automatic hold open arm locks cover in open position

**LATCH** Slam latch Type 316 Stainless Steel with inside lever handle, includes removable 5/16 inch steel square "L" handle and threaded plug

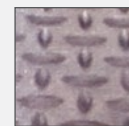
### MATERIALS



Aluminum



Primed Steel



Stainless Steel

### INSTALLATION



Bolt-in

### ORDER GUIDE

MODEL	MATERIAL	WIDTH	X	LENGTH	COVER	BL	-	OPTIONS
BFDEPA			X					
	<b>A</b> 1/4" Aluminum	<b>Standard Sizes (W x L)</b>			<b>S</b> Single Door			Locks Finishes Gaskets Operation Safety Skirting Other
	<b>P</b> 3/16" Steel, Primed	Single Leaf	Double Leaf		<b>D</b> Double Door			
	<b>S</b> 3/16" Stainless Steel, Type 304	24" x 24"	48" x 48"					
	<b>V</b> 3/16" Stainless Steel, Type 316	30" x 36"	48" x 72"					
		36" x 36"	60" x 60"					



# Surface Mount

## FLOOR DOOR, 150PSF

The Surface Mount Floor Door is designed for retrofit applications with internal flanges for easy mounting. This door is an economical option for areas where water or moisture intrusion is not a concern.

### FEATURES

**SURFACE MOUNT** Constructed with an interior angle frame (flange) for easy bolting to an opening in the floor.

**SECURITY CLOSURE** Built with an external padlock hasp for secure closure when not in use ensuring safety from falls, theft and vandalism.



### DETAILS

**LOAD** 150psf live load

**MATERIAL** Aluminum: 3/16 inch, mill finish with gray primer on exterior frame

**COVER** Diamond tread plate

**FRAME** Interior angle (flange)

**INSTALLATION** Surface mount, mechanically fastened: bolt holes, 3/8 inch diameter

**SPRING** Coil Type 17-7 Stainless Steel, enclosed in Type 316 Stainless Steel telescopic tubes

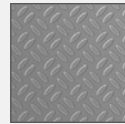
**HINGES** Heavy duty Type 316 Stainless Steel

**HOLD OPEN ARM** Type 316 Stainless Steel automatic hold open arm with red vinyl grip handle, locks cover in open position

**LATCH** Slam latch Type 316 Stainless Steel with inside lever handle, includes removable 5/16 inch steel square "L" handle and threaded plug

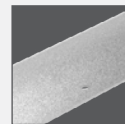
**GASKET** EPDM, around door perimeter

### MATERIALS



Aluminum

### INSTALLATION



Surface Mount

### ORDER GUIDE

MODEL	WIDTH	X	LENGTH	OPTIONS	
BFDNLA		X		SELN	-
	Standard Sizes (W x L)				
	24" x 24"				Locks
	30" x 30"				Finishes
	30" x 36"				Gaskets
	36" x 36"				Operation
	42" x 42"				Safety
					Skirting
					Other

# Water Tight

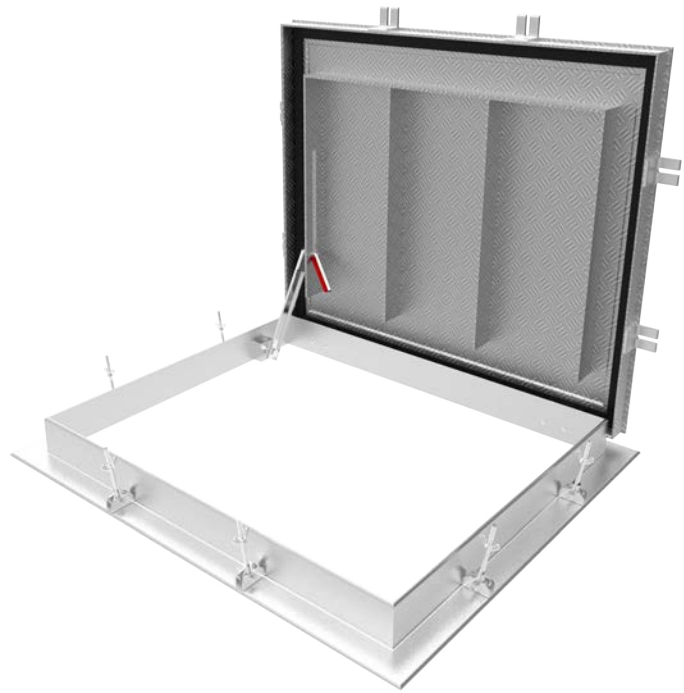
## WELL HATCH, 625PSF

Babcock-Davis' Water Tight Well Hatch is designed for water-tightness up to 10 foot water column and 625psf load capacity. With waterproof gaskets and pressure locks, this hatch design is ideal for wells and areas prone to flooding.

### FEATURES

**PRESSURE LOCKS** Constructed with pressure lock latches with wing nuts to securely fasten the hatch lid closed.

**GASKET** A water and odor resistant, EPDM rubber gasket seal is applied around the perimeter of the cover.



### DETAILS

**LOAD** 625psf live load

**MATERIAL** Aluminum: 1/4 inch, mill finish with gray primer on exterior frame

**COVER** Diamond tread plate

**FRAME** Angle

**INSTALLATION** Surface mount, mechanically fastened: field drilled by others

**SPRING** Coil Type 17-7 Stainless Steel enclosed in Type 316 Stainless Steel telescopic tubes

**HINGES** Heavy duty Type 316 Stainless Steel butt hinges

**HOLD OPEN ARM** Type 316 Stainless Steel automatic hold open arm locks cover in open position

**LATCH** Type 316 Stainless Steel pressure locks

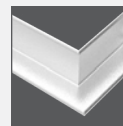
**CERTIFICATION** Tested to 10 foot hydrostatic pressure

### MATERIALS



Aluminum

### INSTALLATION



Surface Mount

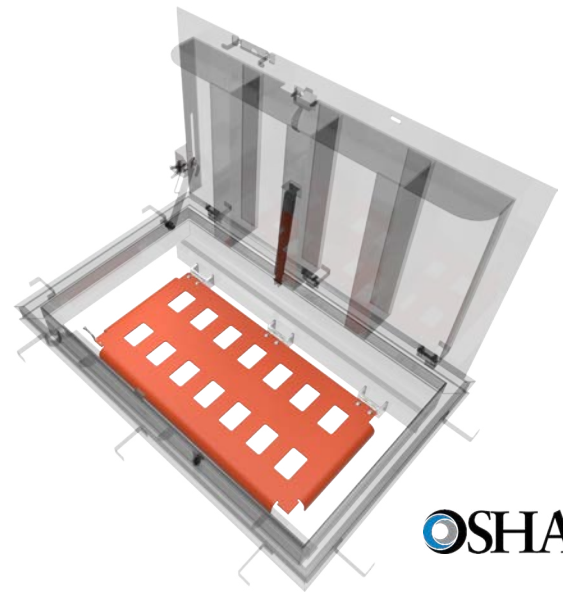
### ORDER GUIDE

MODEL	WIDTH	X	LENGTH	OPTIONS	
BFDWTA		X		SSW	-
	Standard Sizes (W x L)				
	24" x 24"				Locks
	30" x 30"				Finishes
	30" x 36"				Gaskets
	36" x 36"				Operation
	42" x 42"				Safety
					Skirting
					Other

# Safety Grating

## FALL PROTECTION

Babcock-Davis' OSHA compliant Safety Grating provides a permanent means of fall protection under floor doors and allows maintenance professionals and workers access in underground areas. Designed with 4 inch by 2-1/2 inch openings for maintenance access. It is available as a factory installed option with most floor door styles.



### DETAILS

**LOAD** 300psf live load

### MATERIAL

- Aluminum: 1/4 inch plate, orange powdercoat
- Plastic: fiber reinforced (FRP), yellow

**HOLD OPEN LATCH** Stainless steel with optional padlock hasp

**COMPLIANCE** OSHA 29 CFR1926.502(c)

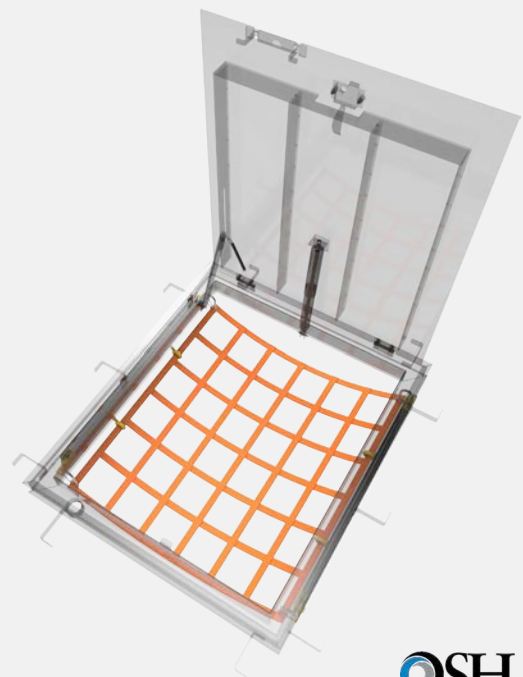
### ORDER GUIDE

MODEL	MATERIAL	LATCH
-SG		
	Y Aluminum, Yellow Powder Coat	N No Padlock
	O Aluminum, Orange Powder Coat	P Padlock
	YF Yellow, Fiber Reinforced Plastic	

# Safety Nets

## FALL PROTECTION

Babcock-Davis' Safety Net is designed to be installed in floor door openings to reduce risks associated with falls. The safety net easily slides on guide rails to facilitate entry and then repositioned to prevent fall through. This system also prevents objects from falling through the opening onto people below.



### DETAILS

**LOAD** 5000 lb breaking strength

### MATERIAL

- Rail: Extruded aluminum 6061 T6
- Netting: Nylon webbing
- Rings: Aluminum alloy

### INSTALLATION

- New Construction: 1/2 inch nuts and bolts
- Retrofit: 1/2 inch wedge-style concrete anchors

**COMPLIANCE** OSHA 29 CFR1926.502(c)

### ORDER GUIDE

MODEL	WIDTH	X	LENGTH	INSTALL
SN		X		-
A	Aluminum	Standard Sizes (W x L) 36" x 30" 48" x 60"		N New Install
S	Stainless Steel			R Retrofit

# Safety Railings

## FALL PROTECTION

Babcock-Davis' OSHA compliant Safety Railing is an ideal solution to provide a permanent means of fall protection for new and retrofit applications. The safety railing permanently mounts to the floor around an existing floor door or opening.

### DETAILS

**MATERIAL** 1-1/4 inch ID (1.66 inch OD) Schedule 40 pipe

**FITTINGS** Cast aluminum alloy with set screw hold

**HARDWARE** Hex head bolts 3/8 inch - 16 x 3/4 inch zinc plated steel

### EXIT

- Self Closing Gate: Galvanized steel 1-1/4 inch tubular steel self closing with coil spring
- Chain: 3/16 inch zinc plated steel link chain with spring clip ends

**COMPLIANCE** OSHA 29 CFR1910.23 guarding floor and wall openings and holes

**SIZES** Industry standard and custom sizes available



### ORDER GUIDE

BASE	WIDTH	X	LENGTH	INSTALL
<b>SRTG</b>		<b>X</b>		
	Standard Sizes (W x L)			
	30" x 18"		<b>F</b> Front Exit	<b>C</b> Chain
	30" x 24"		<b>S</b> Side Exit (Single Leaf Door)	<b>G</b> Self-Closing Gate
	36" x 30"		<b>D</b> Side Exit (Double Leaf Door)	
	36" x 36"			
	48" x 48"			

# Ladder Safety Post

## FALL PROTECTION

The Safety Post is designed in compliance to OSHA to extend 42 inches above a landing platform to provide safe ladder access through a roof hatch. The spring assisted telescoping design mounts to the top two rungs of a fixed vertical ladder.

### DETAILS

**MATERIAL** 1-1/2 inch by 1-1/2 inch by 1/8 inch high strength square tubing with a pull up loop provided at the upper end to facilitate raising of post

- Rail: Extruded aluminum 6061 T6
- Netting: Nylon webbing
- Rings: Aluminum alloy

**FINISH** Powder coat (steel), Mill (aluminum) or 2B Matte (stainless steel)

**FITTINGS** Cast aluminum alloy with set screw hold

**BALANCING SPRING** Stainless steel constant force spring

**HARDWARE** Type 316 Stainless Steel



### ORDER GUIDE

MODEL	MATERIAL	FINISH
<b>BSPY</b>	Steel	Powder Coat, Yellow
<b>BSPG</b>	Steel	Hot Dip Galvanized
<b>BSPA</b>	Aluminum	Mill
<b>BSPS</b>	Stainless Steel	Mill

# Safety Chains

## FALL PROTECTION

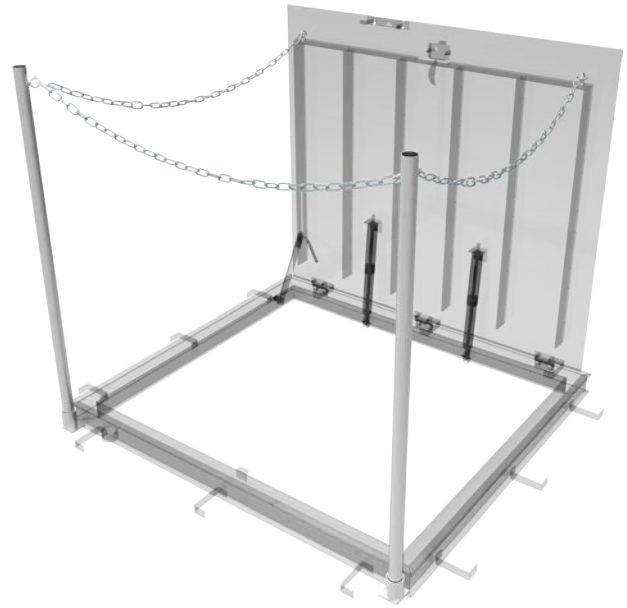
Add an optional barrier for floor doors and hatches with Safety Chains. Constructed of posts and loop chain, the system is available on three sides for single door or two sides for double door configurations.

### DETAILS

**POST MATERIAL** Aluminum tubing, 1-1/2 inch O.D. by .065 inch wall thickness

**CHAIN MATERIAL** Stainless Steel, 2/16 inch loop chain, attached with spring clips to lifting eye nut

**MOUNT** Aluminum tubing, 2 inch O.D. with 2-1/2 inch mounting plate welded to exterior of frame



### ORDER GUIDE

MODEL	MATERIAL
SC1	2 Post
SC2	4 Post

## Loads

### LIGHT DUTY

Tested to 150 lbs per square foot loading.

### STANDARD DUTY/PEDESTRIAN

Tested to 300 lbs per square foot live loading.

### H20 CLASSIFICATION

The American Associate of State Highway and Transportation Officials (AASHTO) "Standard Specification for Highways Bridges" defines H-20 loading as a two-axle truck with a maximum dual-wheel load of 16,000 lbs. HS-20 loading is defined as a tractor truck with a tandem axle semi-trailer with a dual-wheel load of 16,000 lbs.

The maximum safe live load is calculated by dividing the load at failure by two.

## OSHA

### OSHA 29 CFR 1910.23 GENERAL INDUSTRY

Guarding floor and wall openings and holes

- All openings must be protected
- 1910.23(a)(4) Every skylight floor opening and hole
  - Shall be guarded by a standard skylight screen or a fixed standard railing on all exposed sides

### OSHA 29 CFR 1926.502 CONSTRUCTION INDUSTRY

Fall protection systems criteria

- Each employee on walking/working surface shall be protected from falls through holes more than 6 feet.
  - Includes guardrails, safety nets, personal fall arrests, etc.



# Materials



Aluminum  
(Diamond  
Tread Plate)



Steel  
(Diamond  
Tread Plate)

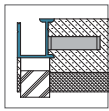


Type 304  
Stainless Steel  
(Diamond  
Tread Plate)

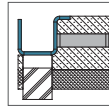


Type 316  
Stainless Steel

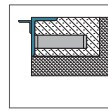
# Frames



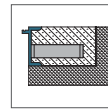
Aluminum  
Gutter  
Frame



Steel  
Gutter  
Frame



Aluminum  
Angle  
Frame



Aluminum  
C-Channel  
Frame

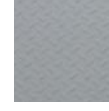
# Finish + Color



Clear  
FA1



Dark Bronze  
FA6



ANSI 70 Gray  
FP1



Safety Yellow  
FP48

MODEL	MATERIAL	TYPE	COLOR
FNN	Aluminum	Epoxy	Mill
FXW	Aluminum	Epoxy	White
FLC		Lacquer	Clear
FTB		Bituminous	Black
FA1	Aluminum	Anodize	Clear
FA4	Aluminum	Anodize	Light Bronze
FA6	Aluminum	Anodize	Dark Bronze
FP1	Steel	Powder Coat	ANSI 70 Gray
FP43	Steel	Powder Coat	Traffic White
FP48	Steel	Powder Coat	Safety Yellow
F5N		Slip-Not	-
FP2		Anti-Skid Paint	-
FCA	Stainless Steel	Citric Acid Tint Removal	-

Colors shown give only an indication of shade. Samples are available upon request

# Latches + Locks



Padlock  
Hasp



Detention  
Lock



Recessed  
Padlock  
Hasp



Mortise  
Operated  
Deadbolt

MODEL	TYPE	BRAND	DESCRIPTION	LOCK ACCESS
PH	Padlock Hasp	None	Standard	Exterior
PR	Padlock Hasp	None	Recessed	Exterior
D1A	Detention	Brinks 7016	Prep Only	Interior & Exterior
D1B	Detention	Brinks 7016	Prep Only	Interior Only
D1C	Detention	Brinks 7016	Prep Only	Exterior Only
D11	Detention	Brinks 7016	Keyed Lock	Interior & Exterior
D12	Detention	Brinks 7016	Keyed Lock	Interior Only
D13	Detention	Brinks 7016	Keyed Lock	Exterior Only
MC6	Mortise	Best Cylinder	Long Key w/Plastic Core	Exterior Only
MSA	Mortise	Schlage Deadbolt	Prep	Interior & Exterior
MS1	Mortise	Schlage Deadbolt	Keyed	Interior & Exterior

# Options

## COVER



Grating  
OCG1



View Port  
Window  
OW1



2 in Polyiso  
Insulation  
INR

## OPERATION



Panic Bar  
GC



Door Position  
Sensor  
OP1



Custom Height  
H\_

## GASKETS



Odor  
Reduction\* GO  
Debris GD



Grab Bar  
OG1



Nut Rail  
NR

\*Available for single leaf drainable floor doors; max size 42" x 42"



 **babcockdavis**

9300 73RD AVENUE NORTH  
BROOKLYN PARK, MN 55428

(888) 412-3726  
(888) 312-3726 FAX

[WWW.BABCOCKDAVIS.COM](http://WWW.BABCOCKDAVIS.COM)