



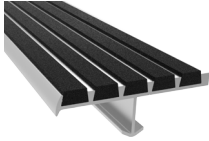
Direct Service Done Right



07 9100  
Preformed Joint Seals  
Catalog

DIV  
5

**STAIR TREADS  
+ NOSINGS**  
05 5000



**FALL PROTECTION**  
05 5213 / 07 7200



For over 70 years Nystrom has been the go to manufacturer for specialty building products.

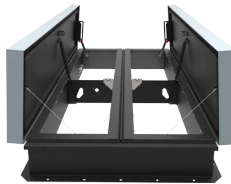
Today we provide a wide range of floor, roof and safety related access products that help create safer, more accessible buildings.

DIV  
7

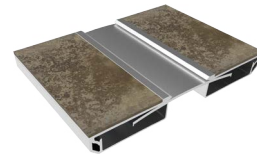
**ROOF HATCHES**  
07 7200



**SMOKE VENTS**  
07 7200



**PREFORMED JOINT SEALS +  
EXPANSION JOINT SYSTEMS**  
07 9100 + 07 9513



DIV  
8

**ACCESS DOORS  
+ PANELS**  
08 3100



**FLOOR DOORS  
+ HATCHES**  
08 3483



**LUMINOUS EGRESS  
PRODUCTS**  
10 1443



DIV  
10

DIV  
10

**WALL + DOOR  
PROTECTION**  
10 2600



**FIRE PROTECTION CABINET  
+ FIRE EXTINGUISHERS**  
10 4413 + 10 4416



**ENTRANCE MATS + FRAMES  
ENTRANCE FLOOR GRILLES**  
12 4813 + 12 4816



DIV  
12



DIVISION 07 9100

## Preformed Joint Seals

### STANDARD SEALS

5-8

Seismic Compression Seal	5
Small Joint Compression Seal	6
Horizontal Deck Compression Seal	7
Parking Deck Compression Seal	8

### Options

17-18

Transition Seals	17
Termination Seals	17
Color Options	18

### FIRE-RATED & SECURITY SEALS

9-12

Fire-Rated Wall Compression Seal	9
Fire-Rated Deck Compression Seal	10
Security Fire-Rated Wall Compression Seal	11
Security Fire-Rated Deck Compression Seal	12

### SPECIALTY SEALS

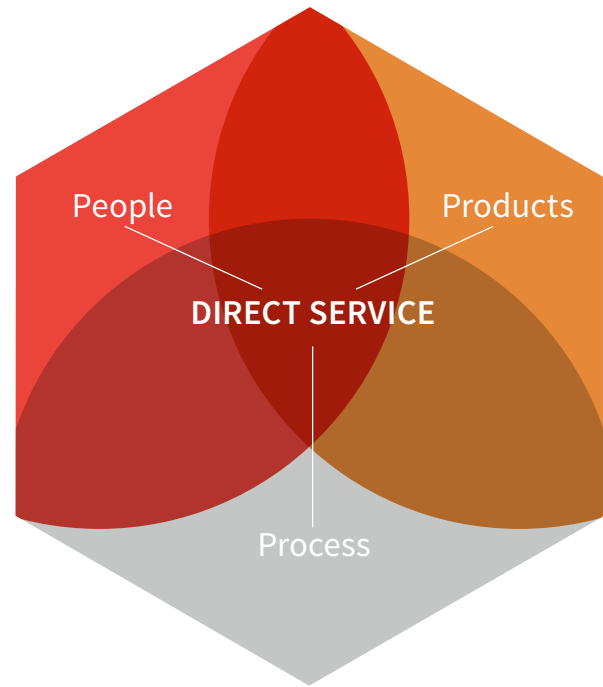
13-16

Hydrostatic Compression Seal	13
Closed Cell Foam Sealant	14
Perimeter Deck Compression Seal	15
Acoustic Foam and Glazing Sealant	16

# Direct Service Done Right

Nystrom offers a broad line of specialty building products to better serve construction professionals and architects.

We have customer focused professionals and hassle-free processes that directly serve and simplify the building process.



## PEOPLE

architects, engineers, designers, estimators, construction professionals, and service specialists

## PROCESS

estimating & bid design support, tech support, logistics support, installation support, cad, revit/bim

## PRODUCTS

standard & custom designs, warehousing, quality assurance, exceptional warranties, lead certification, labeling & tagging

## TIME

## EFFICIENCY

## SERVICE



## SPECIFICATION SUPPORT

By giving architects, designers and contractors open access to our expert team, we simplify the process of specifying and procuring access products from design through delivery and installation.

# Seismic

## COMPRESSION SEAL (SES)



Structural, high-movement joints. Nystrom's Seismic Compression Seal is precompressed and designed for use in structural, high-movement joints. Conforming to joint gap irregularities, it is held in place by the expanding foam and field-installed silicone caulk. It is watertight, 100% free of wax or asphalt compounds, has non-invasive anchoring, and is thermally insulating.

### FEATURES

**SOUND ATTENUATING** Acoustic dampening rated STC 52 - OITC 38.

**COLOR COORDINATING** Add a complementary color to your building with one of the available pre-tinted silicone colors.

**OMNI-DIRECTIONAL** Curves and abrupt changes in building elements are easily accommodated while maintaining its watertightness.

### DETAILS

**MATERIAL** Silicone bellow with foam sealant

**SIZE** 1/2 inch to 12 inches

#### LENGTH

- 10 linear foot roll for sizes up to 1.25 inches
- 6.56 linear feet (2 meter)

**APPLICATION** Interior or Exterior

**INSTALLATION** Wall

**COLORS** Sikasil WS-295

**OPTIONS** Terminations and Transitions

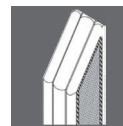
**MOVEMENT** +/-50% (Total 100%)

### MATERIALS



Silicone Bellow

### OPTIONS



Terminations



Transitions

### MODELS

MODEL	JOINT SIZE at mean T° F	SEAL DEPTH	MODEL	JOINT SIZE at mean T° F	SEAL DEPTH
SES-050	1/2" (12mm)	1-3/4" (45mm)	SES-600	6" (150mm)	6" (150mm)
SES-075	3/4" (20mm)	1-3/4" (45mm)	SES-700	7" (175mm)	7" (175mm)
SES-100	1" (25mm)	1-3/4" (45mm)	SES-800	8" (200mm)	8" (200mm)
SES-200	2" (50mm)	2-1/2" (65mm)	SES-850	8-1/2" (216mm)	8" (200mm)
SES-300	3" (75mm)	3-1/2" (90mm)	SES-900	9" (229mm)	8" (200mm)
SES-400	4" (100mm)	4-1/2" (114mm)	SES-950	9-1/2" (241mm)	8" (200mm)
SES-500	5" (125mm)	5-1/2" (140mm)	SES-1000	10" (254mm)	8" (200mm)

**MOVEMENT OF +/-50% (TOTAL 100%)**

Notes: Sizes from 1/2" (12mm) to 1-1/4" (30mm) are manufactured with a single silicone face bellow. Larger sizes up to 8" (200mm) are manufactured with multiple bellows.

Additional sizes available in 1/4" increments from 1" to 6", 1/2" increments from 6" to 8".

Download Drawings, CAD, Spec, and LEED documents at [www.Nystrom.com](http://www.Nystrom.com)

# Small Joint

## COMPRESSION SEAL (SER)

Rolled small joint seal. The Small Joint Compression Seal is a precompressed seal that is designed for quick use in small joints and comes on a 10 foot roll. Held in place by the expanding foam and field-installed silicone caulk, it is economic, watertight, resists hurricane force wind and water, thermally insulating, and has non-invasive anchoring.



### FEATURES

**EASY TO USE** The 10 linear foot roll makes handling and installation easier and quicker than traditional caulk and backer rod installation and reduces waste.

**COLOR COORDINATING** Add a complementary color to your building with one of the available pre-tinted silicone colors.

**HORIZONTAL INSTALLATION** The small gap compression seal can be installed in walkways, concrete slabs and decks.

### DETAILS

**MATERIAL** Silicone bellow with foam sealant

**SIZE** 1/2 inch to 1-1/4 inches

**LENGTH** 10 linear foot roll

**APPLICATION** Interior or Exterior

**INSTALLATION** Floor or Wall

**COLORS** Sikasil WS-295

**MOVEMENT** +30 and -50% (Total 80%)

### MATERIALS



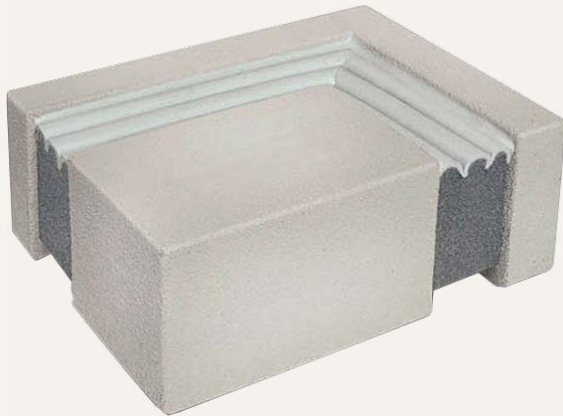
*Silicone  
Bellow*

### MODELS

MODEL	JOINT SIZE at mean T° F	SEAL DEPTH
SER-050	1/2" (12mm)	1-3/4" (45mm)
SER-075	3/4" (20mm)	1-3/4" (45mm)
SER-100	1" (25mm)	1-3/4" (45mm)
SER-125	1-1/4" (30mm)	1-3/4" (45mm)

# Horizontal Deck

## COMPRESSION SEAL (HES)



Standard floor and parking deck seal. This Horizontal Deck Compression Seal is a high-movement silicone bellow system used in deck or roof perimeters. Conforming to joint gap irregularities, it is held in place by the expanding foam and field-installed silicone caulk. It is watertight, wax free, UV stable with low and high temperature stability and can be used under a cover plate in pedestrian or light vehicular traffic areas.

### FEATURES

**MULTI-FUNCTIONAL** The primary seal creates a watertight assembly and preserves the buildings R-value.

**COLOR COORDINATING** Add a complementary color to your building with one of the available pre-tinted silicone colors.

**WAX FREE** When heated and compressed, the foam sealant will not bleed from wax saturation.

### DETAILS

**MATERIAL** Silicone bellow with foam sealant

**SIZE** 1/2 inch to 8 inches

#### LENGTH

- 10 linear foot roll for sizes up to 1.25 inches
- 6.56 linear feet (2 meter)

**APPLICATION** Interior or Exterior

**INSTALLATION** Floor

**COLORS** Sikasil WS-295

**OPTIONS** Terminations and Transitions

**MOVEMENT** +/-50% (Total 100%)

### MATERIALS

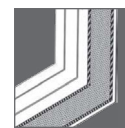


Silicone Bellow

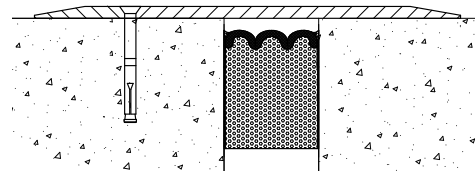
### OPTIONS



Terminations



Transitions



Decking Application (Pedestrian or Light Cart Traffic) - used in conjunction with a metal cover plate.

### MODELS

MODEL	JOINT SIZE at mean T° F	SEAL DEPTH	MODEL	JOINT SIZE at mean T° F	SEAL DEPTH
HES-050	1/2" (12mm)	1-3/4" (45mm)	HES-400	4" (100mm)	4-1/2" (115mm)
HES-075	3/4" (20mm)	1-3/4" (45mm)	HES-500	5" (125mm)	5-1/2" (140mm)
HES-100	1" (25mm)	1-3/4" (45mm)	HES-600	6" (150mm)	6" (150mm)
HES-200	2" (50mm)	2-1/2" (65mm)	HES-700	7" (175mm)	7" (175mm)
HES-300	3" (75mm)	3-1/2" (90mm)	HES-800	8" (200mm)	8" (200mm)

Notes: Sizes under 1-1/2" (40mm) are manufactured with a single silicone face bellow. Larger sizes up to 8" (200mm) are manufactured with multiple bellows.

Additional sizes available in 1/4 inch increments from 1 inch to 6 inches, 1/2 inch increments from 6 inches to 8 inches.

# Parking Deck

## COMPRESSION SEAL (PDM)

Vehicular rated for thermal joints. Nystrom's Parking Deck Compression Seal is a high-movement silicone bellow system used below grade with impregnated foam sealants. This system features a greater performance than any previous predecessor. In addition, it is colorless, clean handling, UV stable and features low temperature flexibility not previously available in asphalt, wax or isobutylene based products.



### FEATURES

**WATERTIGHT** The primary seal creates a watertight assembly even across intersections as tested against a fire-hose.

**NON-INVASIVE ANCHORING** No metal-to-substrate connections. The system is locked into place by back-pressure of foam, epoxy, and injected sealant bands at the face.

**TRAFFIC-DURABLE** This system holds up against high movement and traffic loads found in parking structures.

### DETAILS

**MATERIAL** Silicone bellow with foam sealant

**SIZE** 1/2 inch to 4 inches

**LENGTH** 6.56 linear feet (2 meter)

**APPLICATION** Interior or Exterior

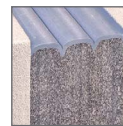
**INSTALLATION** Floor

**COLORS** Sikasil WS-295 Deck Gray

**OPTIONS** Terminations and Transitions

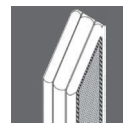
**MOVEMENT** +/-50% (Total 100%)

### MATERIALS

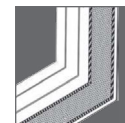


Silicone Bellow

### OPTIONS



Terminations



Transitions

### MODELS

MODEL	JOINT SIZE at mean T° F	SEAL DEPTH
PDM-050	1/2" (12mm)	1-3/4" (45mm)
PDM-075	3/4" (20mm)	1-3/4" (45mm)
PDM-100	1" (25mm)	2" (50mm)
PDM-200	2" (50mm)	2-1/2" (65mm)
PDM-300	3" (75mm)	3-1/4" (82mm)
PDM-400	4" (100mm)	4" (100mm)

Additional sizes available in 1/4 inch increments from 1 inch to 4 inches.



# Fire-Rated Wall

## COMPRESSION SEAL (FES2/FES3)



Standard fire-retardant wall foam. The 2-hour and 3-hour Fire-Rated Wall Compression Seal is a silicone bellow system designed with a fire-retardant saturated foam. It is watertight, fire-rated, and has a dual sided primary seal for both new and retrofit structural expansion joints in wall applications.

### FEATURES

**FIRE-RATED** The precompressed seal is composed of a fire-retardant impregnated foam that is coated on both faces.

**MULTI-FUNCTIONAL** This seal provides water and fire protection, color coordination, thermal insulation, sound attenuation and structural joint movement.

**SOUND ATTENUATING** Acoustic dampening rated STC 62 - OITC 52.

### DETAILS

**MATERIAL** Silicone bellow with foam sealant

**SIZE** 1/2 inch to 6 inches

**LENGTH** 6.56 linear feet (2 meter)

**APPLICATION** Interior or Exterior

**INSTALLATION** Wall

**CERTIFICATION** UL 2079, ASTM E1966, E119 and E1399

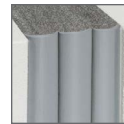
**COLORS** Sikasil WS-295

**OPTIONS** Terminations and Transitions

#### MOVEMENT

- 2-Hour: +/-50% (Total 100%)
- 3-Hour: +/-25% (Total 50%)

### MATERIALS



Silicone Bellow

### OPTIONS



Terminations



Transitions

### MODELS

2-HOUR MODEL	JOINT SIZE at mean T° F	SEAL DEPTH	3-HOUR MODEL	JOINT SIZE at mean T° F	SEAL DEPTH
FES2-050	1/2" (12mm)	4" (100mm)	FES3-050	1/2" (12mm)	5" (125mm)
FES2-075	3/4" (20mm)	4" (100mm)	FES3-075	3/4" (20mm)	5" (125mm)
FES2-100	1" (25mm)	4" (100mm)	FES3-100	1" (25mm)	5" (125mm)
FES2-200	2" (50mm)	4" (100mm)	FES3-200	2" (50mm)	5" (125mm)
FES2-300	3" (75mm)	4" (100mm)	FES3-300	3" (75mm)	5" (125mm)
FES2-400	4" (100mm)	4" (100mm)	FES3-400	4" (100mm)	5" (125mm)
FES2-500	5" (125mm)	4" (100mm)	FES3-500	5" (125mm)	5" (125mm)
FES2-600	6" (150mm)	4" (100mm)	FES3-600	6" (150mm)	5" (125mm)

Additional sizes available in 1/4 inch increments from 1 inch to 6 inches.

# Fire-Rated Deck

## COMPRESSION SEAL (FHES2/FHES3)

Fire-retardant floor and deck foam. Nystrom's Fire-Rated Deck Compression Seal is a silicone bellow system designed with a 2- or 3-hour fire-retardant saturated foam. It is watertight, fire-rated, and has a dual sided primary seal for both new and retrofit structural expansion joints in parking deck applications.



### FEATURES

**FIRE-RATED** The precompressed seal is composed of a fire-retardant impregnated foam that is coated on both faces.

**MULTI-FUNCTIONAL** This seal provides water and fire protection, color coordination, thermal insulation, sound attenuation and structural joint movement.

**TRAFFIC-DURABLE** This system holds up against high movement and traffic loads found in parking structures.

### DETAILS

**MATERIAL** Silicone bellow with foam sealant

**SIZE** 1/2 inch to 4 inches

**LENGTH** 6.56 linear feet (2 meter)

**APPLICATION** Interior or Exterior

**INSTALLATION** Floor or Deck

**CERTIFICATION** UL 2079, ASTM E1966, E119 and E1399

**COLORS** Sikasil WS-295 Deck Gray

**OPTIONS** Terminations and Transitions

#### MOVEMENT

- 2-Hour: +/-50% (Total 100%)
- 3-Hour: +/-25% (Total 50%)

### MATERIALS

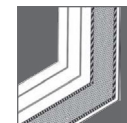


Silicone Bellow

### OPTIONS



Terminations



Transitions

### MODELS

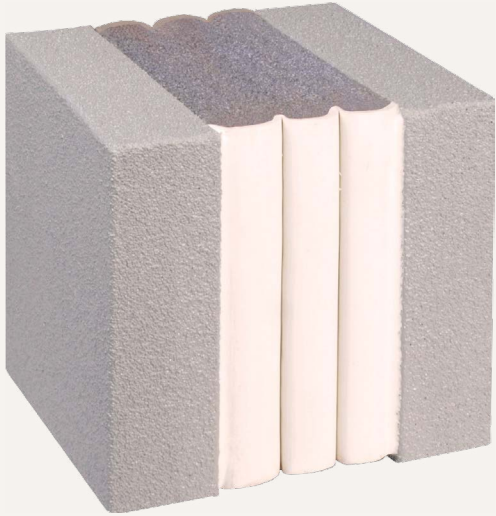
2-HOUR MODEL	JOINT SIZE at mean T° F	SEAL DEPTH
FHES2-050	1/2" (12mm)	4" (100mm)
FHES2-100	1" (25mm)	4" (100mm)
FHES2-200	2" (50mm)	4" (100mm)
FHES2-300	3" (75mm)	4" (100mm)
FHES2-400	4" (100mm)	4" (100mm)

3-HOUR MODEL	JOINT SIZE at mean T° F	SEAL DEPTH
FHES3-050	1/2" (12mm)	4" (100mm)
FHES3-100	1" (25mm)	4" (100mm)
FHES3-200	2" (50mm)	4" (100mm)
FHES3-300	3" (75mm)	4" (100mm)
FHES3-400	4" (100mm)	4" (100mm)

Additional sizes available in 1/4 inch increments from 1 inch to 4 inches.

# Fire-Rated Security Wall

## COMPRESSION SEAL (PSES2)



Pick-resistant fire-rated wall foam. Nystrom's Fire-Rated Security Wall Compression Seal is a pick resistant, watertight, 2-hour fire-rated expansion joint for locations requiring a hardened tamper-resistant surface. Conforming to joint gap irregularities, it is held in place by the expanding foam and field-installed polyurethane caulk. Ideal for walls in prisons, detention centers, mental and psychiatric hospitals.

### FEATURES

**TAMPER-RESISTANT** A hardened, pick-resistant coating is applied to the face of the expansion joint seal helping prevent vandalism.

**FIRE-RATED** The precompressed seal is composed of a fire-retardant impregnated foam on both faces.

**SOUND ATTENUATING** Acoustic dampening rated STC 62 - OITC 52.

### DETAILS

**MATERIAL** Polyurethane bellow with foam sealant

**SIZE** 1/2 inch to 6 inches

**LENGTH** 6.56 linear feet (2 meter)

**APPLICATION** Interior or Exterior

**INSTALLATION** Wall

**CERTIFICATION** UL 2079, ASTM E1966, E119 and E1399

**COLORS** Pecora TruWhite or Limestone only

**OPTIONS** Terminations and Transitions

**MOVEMENT** +/-50% (Total 100%)

### MATERIALS



Polyurethane Bellow

### OPTIONS



Terminations



Transitions

### MODELS

MODEL	JOINT SIZE at mean T° F	SEAL DEPTH
PSES2-050	1/2" (12mm)	4" (100mm)
PSES2-075	3/4" (20mm)	4" (100mm)
PSES2-100	1" (25mm)	4" (100mm)
PSES2-200	2" (50mm)	4" (100mm)
PSES2-300	3" (75mm)	4" (100mm)
PSES2-400	4" (100mm)	4" (100mm)
PSES2-500	5" (125mm)	4" (100mm)
PSES2-600	6" (150mm)	4" (100mm)

Notes Sizes under 1-1/4" (30mm) are manufactured with a single silicone face bellow. Larger sizes up to 6" (150mm) are manufactured with multiple bellows.

Additional sizes available in 1/4 inch increments from 1 inch to 6 inches.

# Fire-Rated Security Deck

## COMPRESSION SEAL (PHES2/PHES3)

Pick-resistant fire-rated floor and deck foam. The pick-resistant Fire-Rated Security Deck Compression Seal is 2- or 3-hour fire-retardant system for locations requiring a hardened tamper-resistant surface. Held in place by the expanding foam and field-installed polyurethane caulk, this system is designed for use in floors and decks found in prisons, detention centers, mental and psychiatric hospitals.

### FEATURES

**TAMPER-RESISTANT** A hardened, pick-resistant coating is applied to the face of the expansion joint seal helping prevent vandalism.

**FIRE-RATED** The precompressed seal is composed of a fire-retardant impregnated foam that is coated on both faces.

**SOUND ATTENUATING** Acoustic dampening rated STC 62 - OITC 52.



### DETAILS

**MATERIAL** Polyurethane bellow with foam sealant

**SIZE** 1/2 inch to 4 inches

**LENGTH** 6.56 linear feet (2 meter)

**APPLICATION** Interior or Exterior

**INSTALLATION** Floor or Deck

**CERTIFICATION** UL 2079, ASTM E1966, E119 and E1399

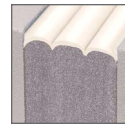
**COLORS** Pecora TruWhite or Limestone only

**OPTIONS** Terminations and Transitions

#### MOVEMENT

- 2-Hour: +/-50% (Total 100%)
- 3-Hour: +/-25% (Total 50%)

### MATERIALS

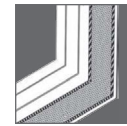


Polyurethane Bellow

### OPTIONS



Terminations



Transitions

### MODELS

2-HOUR MODEL	JOINT SIZE at mean T° F	SEAL DEPTH
PHES2-050	1/2" (12mm)	4" (100mm)
PHES2-100	1" (25mm)	4" (100mm)
PHES2-200	2" (50mm)	4" (100mm)
PHES2-300	3" (75mm)	4" (100mm)
PHES2-400	4" (100mm)	4" (100mm)

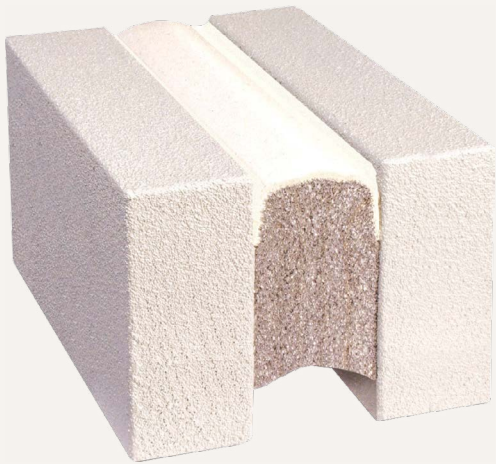
3-HOUR MODEL	JOINT SIZE at mean T° F	SEAL DEPTH
PHES3-050	1/2" (12mm)	4" (100mm)
PHES3-100	1" (25mm)	4" (100mm)
PHES3-200	2" (50mm)	4" (100mm)
PHES3-300	3" (75mm)	4" (100mm)
PHES3-400	4" (100mm)	4" (100mm)

Notes: Sizes under 1-1/2" (40mm) are manufactured with a single silicone face bellow. Larger sizes up to 4" (100mm) are manufactured with multiple bellows.

Additional sizes available in 1/4 inch increments from 1/2 inch to 4 inches.

# Hydrostatic

## COMPRESSION SEAL (MES)



Foam for continuous immersion in water. The new Hydrostatic Compression Seal is water resistant, joint face adhered, precompressed expansion joint sealant for continuous immersion in chlorinated, saline or potable water environments. Ideal for swimming pools, fountains, water parks and water tanks.

### FEATURES

**POOL SAFE** Safe for use in potable water, chlorinated water (up to 5ppm), saline water and certain effluent concentrations.

**WATERTIGHT** In conjunction with the field applied epoxy adhesive, silicone bead, the factory applied primary seal creates a watertight assembly.

**RESISTS HEAD PRESSURE** Tested for hydrostatic head pressure for submerged applications.

### DETAILS

**MATERIAL** Silicone bellow with foam sealant

**SIZE** 1/2 inch to 4 inches

**LENGTH** 6.56 linear feet (2 meter)

**APPLICATION** Standing Water

**INSTALLATION** Horizontal

**COLORS** Dow 748 White only

**MOVEMENT** +/-25% (Total 50%)

### MATERIALS



Silicone Bellow

### MODELS

MODEL	JOINT SIZE at mean T° F	SEAL DEPTH
MES-050	1/2" (12mm)	1-3/4" (45mm)
MES-075	3/4" (20mm)	1-3/4" (45mm)
MES-100	1" (25mm)	2-1/8" (45mm)
MES-200	2" (50mm)	3" (75mm)
MES-300	3" (75mm)	3-1/2" (90mm)
MES-400	4" (100mm)	4-3/4" (120mm)

Additional sizes available in 1/4 inch increments from 1/2 inch to 4 inches.

### HYDROSTATIC HEAD PRESSURE RESISTANCE

JOINT SIZE	CONTINUOUS IMMERSION MAX. ALLOWABLE LIQUID DEPTH
1" (25mm)	30' (10m)
2" (50mm)	20' (6m)
3" (75mm)	15' (5m)
4" (100mm)	10' (3m)

# Closed Cell

## FOAM SEALANT (ES)

Economic and basic foam joint filler. The Closed Cell Foam Sealant is an economic option for basic expansion joint gap filler. This seal is colored, versatile and ideally suited to fill gaps between the ends of permanent, semi-permanent, movable partitions, or head of wall and other conditions.

### FEATURES

**ECONOMIC OPTION** Used in basic expansion joint conditions as a gap filler, this foam sealant is an economic option.

**MOISTURE RESISTANT** The factory applied silicone face membrane resists water penetration.

**COLOR COORDINATING** Available in several pre-tinted silicone colors to complement the surrounding design features.



### DETAILS

**MATERIAL** Silicone with foam sealant

**SIZE** 1 inch to 5 inches

**LENGTH** 5 linear feet

**APPLICATION** Interior or Exterior

**INSTALLATION** Wall

**COLORS** Sikasil WS-295

**MOVEMENT** +/-25% (Total 50%)

### MATERIALS



*Silicone*

### MODELS

MODEL	JOINT SIZE at mean T° F	SEAL DEPTH
ES-100	1" (25mm)	1-1/2" (38mm)
ES-150	1-1/2" (38mm)	2" (50mm)
ES-200	1" (25mm)	2" (50mm)
ES-250	2" (50mm)	2" (50mm)

MODEL	JOINT SIZE at mean T° F	SEAL DEPTH
ES-300	3" (75mm)	2-1/2" (63mm)
ES-350	3-1/2" (88mm)	2-1/2" (63mm)
ES-400	4" (100mm)	2-1/2" (63mm)
ES-500	5" (125mm)	4" (100mm)

# Perimeter Deck

## COMPRESSION SEAL (INS)

Rubber foam for stairwells and elevator shafts. The Perimeter Deck Compression Seal is constructed of flexible, closed cell neoprene expanded rubber foam seal that is adhered in place with epoxy adhesive.



### FEATURES

**NON-INVASIVE ANCHORING** No metal-to-substrate connections. The system is locked into place by back-pressure of foam and epoxy.

**MOISTURE RESISTANT** Bonded in place with a specially formulated two-part epoxy adhesive providing water tightness throughout the joint area.

**TRAFFIC-DURABLE** This system holds up against high movement and traffic loads found in parking structures.

### DETAILS

**MATERIAL** Closed cell neoprene

**SIZE** 1 inch to 4 inches

**LENGTH** Continuous

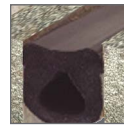
**APPLICATION** Interior or Exterior

**INSTALLATION** Floor, Deck or Wall

**COLORS** Black

**MOVEMENT** +25 and -55% (Total 80%)

### MATERIALS



Neoprene

### MODELS

MODEL	JOINT SIZE at mean T° F
INS-100	1" (25mm)
INS-150	1-1/2" (38mm)
INS-200	2" (50mm)
INS-250	2-1/2" (63mm)
INS-300	3" (75mm)
INS-400	4" (100mm)

# Acoustic

## FOAM SEALANT (QTT/QTG)

Acoustic foam gap filler. Nystrom's Acoustic Foam Sealant is a filler used to control sound, draft, heat, cold and block dust for interior, non-moving joints and gaps and should be used when the joint is visible in walls or interior glass windows. It is colored, versatile and ideally suited to filling gaps between the ends of permanent, semi-permanent, or movable partitions, head of wall and other conditions.

### FEATURES

**AESTHETIC GAP FILLER** The acoustic glazing sealant (QTG) is coated and finished on three sides for optimal glass window aesthetics.

**THERMALLY INSULATING** Insulates and controls thermal energy loss from room to room and through glazing.

**FIRE-RETARDANT** The product is composed of a self-extinguishing, acrylic-impregnated foam, factory pre-coated with high-quality silicone.



### DETAILS

**MATERIAL** Silicone with foam sealant

**SIZE** 1/2 inch to 6 inches

**LENGTH** 10 linear feet (3.04 meter)

**APPLICATION** Interior: Wall or Glass Surface Install

**INSTALLATION** Ceiling or Wall

**COLORS** Sikasil WS-295

### MATERIALS



*Silicone*

### MODELS - WALL

MODEL	JOINT SIZE at mean T° F	SEAL DEPTH
QTT-100	1" (25mm)	2" (50mm)
QTT-200	2" (50mm)	2" (50mm)
QTT-300	3" (75mm)	2" (50mm)
QTT-400	4" (100mm)	2" (50mm)
QTT-500	5" (125mm)	3" (75mm)
QTT-600	6" (150mm)	3" (75mm)

### MODELS - GLAZING

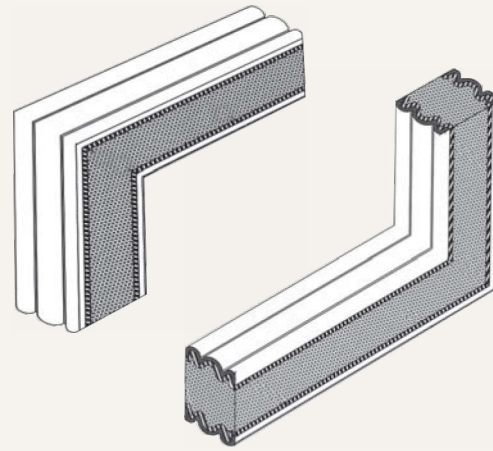
MODEL	JOINT SIZE at mean T° F	SEAL DEPTH
QTG-100	1" (25mm)	2" (50mm)
QTG-200	2" (50mm)	2" (50mm)
QTG-300	3" (75mm)	2" (50mm)
QTG-400	4" (100mm)	2" (50mm)
QTG-500	5" (125mm)	3" (75mm)
QTG-600	6" (150mm)	3" (75mm)



# Transitions

## COMPRESSION SEAL

Performance Differentiator. Nystrom's pre-fabricated transitions allow the continuity of the seal through changes in plane and direction. Available for all of the coated, impregnated foam sealant products, they have the same performance characteristics. Cut at 90 degrees with both ends open for a butt-connection to another stick or transition, either leg can be trimmed for field modification.



### DETAILS

**MATERIAL** Silicone with foam sealant, 2-sided

**SIZE** 12 inches by 6 inches

**TYPE** SES, HES, PDM, FES2, FES3, FHES2, FHES3, PSES2, PHSES2, PHES2, PHES3 or MES

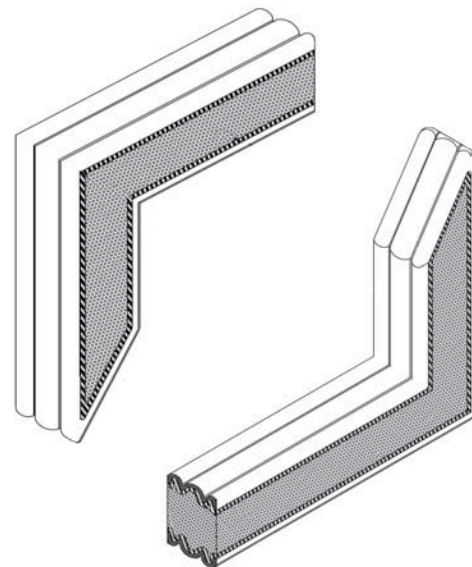
### MODELS

MODEL	DESCRIPTION
T90	Transition, 90° Wall or Horizontal

# Terminations

## COMPRESSION SEAL

Nystrom's pre-fabricated termination is a sealed, mitered end and is coated on both sides. The Termination System allows for a quicker and secure install by eliminating field cutting, notching or bending at angles. Available for all of the coated, impregnated foam sealant products, they have the same performance characteristics.



### DETAILS

**MATERIAL** Silicone with foam sealant, 2-sided

**SIZE** 12 inches by 6 inches

**TYPE** SES, HES, PDM, FES2, FES3, FHES2, FHES3, PSES2, PHSES2, PHES2, PHES3 or MES

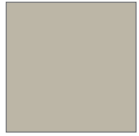
### MODELS

MODEL	DESCRIPTION
TVH	Termination, Wall or Horizontal

# Color Options

## SIKASIL WS-295

### STANDARD



Limestone



White



Beige



Light Gray



Black



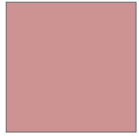
Medium  
Bronze



Sandstone



Adobe Tan



Dusty Rose



Quarry Red



Charcoal



Colonial  
White

*Custom color matching available.  
Call 1.800.547.2635 for more  
information.*

## DOW CORNING 790

### OPTIONAL



Precast



White



Limestone



Gray



Black



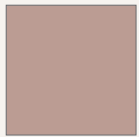
Bronze



Sandstone



Adobe Tan



Dusty Rose



Rustic Brick



Blue Spruce



Charcoal



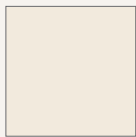
Natural  
Stone

## PECORA 890 NST

### OPTIONAL



Tru White



Precast



Beige



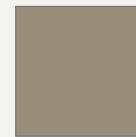
Limestone



Anodized  
Aluminum



Aluminum  
Stone



Natural  
Stone



Sandstone



Charcoal  
Gray



Classic  
Bronze



Black



Hartford  
Green



Red Rock

*Colors shown give only an indication of shade. Samples are available upon request*

# A complete line of Expansion Joint Systems



## INTERIOR FLOOR, WALL + CEILING

- Minimal sight line
- Integrated flooring
- Matching wall systems



## EXTERIOR WALL

- Optional moisture barrier
- Silicone face compression seals
- Covers up to 24" opening



## EXTERIOR ROOF

- Architectural Designs
- Roof Bellows
- Weather proofing for all climates



## EXTERIOR DECK + PARKING

- Parking Deck
- Integrated moisture barrier
- Surface mount available

Visit [www.nystrom.com](http://www.nystrom.com) for the latest version of this document and more information.



9300 73rd Avenue North  
Minneapolis, MN 55428

Phone (800) 547-2635  
Fax (866) 900-1959



[www.nystrom.com](http://www.nystrom.com)