



Stair Treads + Nosings

05 5000 | PRODUCT CATALOG



Great Products.
Better Partners.



Great Products.
Better Partners.



ACCESS DOORS

08 3100



ROOF HATCH + SMOKE VENT

07 7200



FALL PROTECTION

05 5213 / 07 7200



FLOOR DOORS

08 3483



ENTRANCE MATS + GRILLES

12 4813 / 12 48 16



WALL + DOOR PROTECTION

10 2600



STAIR TREADS + NOSINGS

05 5000





Step Up to Safety

Stair Treads + Nosings

SINGLE PART **5-7**

Ribbed Abrasive	5
Full Abrasive	6
Inset	7

TWO-PART **8**

Ribbed Abrasive	8
Full Abrasive	8

RENOVATION **9**

Renovation	9
------------	---

CAST **10**

Aluminum	10
Iron	10

Options

Vision Line	11
Mitered Cut	11
Painted Underside	11
Taped Top	11
Repair Kit	11
Abrasive Colors	11

More than a source for your
commercial building products...

A Partnership

Dear Partner,

Thank you for your continued confidence in Babcock-Davis. On behalf of the entire company, I can tell you that we are motivated and inspired from our partnership. Working with you to deliver commercial building products and services that exceed your expectations is our top priority.

For over 100 years, we have remained dedicated to building and designing the highest quality commercial building products. Our product offering and manufacturing capabilities have grown significantly over the years thanks to the quality commitment of our many hard working employees in Minnesota. We proudly stand behind every product that we ship out every day around the world.

Sourcing commercial building products is never as simple as it seems. This is particularly true when it comes to the type of specialty and architectural building products that we supply. It takes a collaborative effort of resources and information to get the job done right. We understand all the complexities and time sensitivities involved. This is why we have built such a strong network of people and processes to better serve all of you, our partners. We do so with flexibility that meets your needs - not ours.

We are excited for the future and the opportunity to work with you and to continue to exceed your expectations. You have our commitment that we will work hard every day to help you succeed.

If there is anything that we can do to improve our service to you, we will listen.

Sincerely,



Sue W. Thomas | **CHIEF EXECUTIVE OFFICER**

Ribbed Abrasive

STAIR TREAD

Economical and easy to install, Babcock-Davis' single part Ribbed Abrasive Stair Tread and Nosings are perfect for interior and exterior applications where extra safety is desired or required by code.

FEATURES

ANTI-SLIP SAFETY TREADS Reduce slip hazards with ADA and OSHA compliant abrasive stair treads. Abrasive treads provide a high coefficient of friction.

CONTINUOUS COLOR No need to worry about walking off the color as the abrasive material filler is dyed throughout.

OPTIONAL VISION LINE Customize your tread with rows of different colors. Easily mark a safe egress with UL listed photoluminescent or yellow fill.



DETAILS

CHANNEL Extruded Aluminum

APPLICATION Concrete Poured, Steel Pan, Terrazzo or Wood

TREAD Ribbed Abrasive

WIDTH 1-7/8, 3 or 4 inches

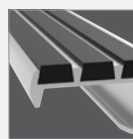
MOUNTING Anchor or Drilled Holes, Mech. Fastened

NOSING Short, Short-Tipped, Long or Angled

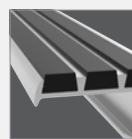
OPTIONS Photoluminescent, Vision Line, Mitered Cuts, Painted Undersides or Taped Tops

COMPLIANCE ADA and California Title 24, Section 3306

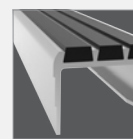
NOSING



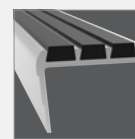
Short



Short-Tipped

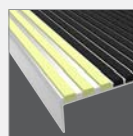


Long

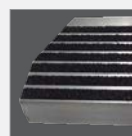


Angled

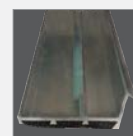
OPTIONS



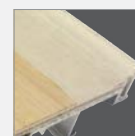
Vision Line



Mitered Cuts



Painted Undersides



Taped Tops

MODELS

MODEL	WIDTH	TREAD	INSTALL
BSTSB-C1.875E	1-7/8"	Short Nose	Cast-In, Extruded Anchor
BSTSB-C1.875D	1-7/8"	Short Nose	Drilled Hole, Mech. Fastened
BSTSB-P1.875E	1-7/8"	Short Tipped Nose	Cast-In, Extruded Anchor
BSTSB-L1.875E	1-7/8"	Long Nose	Cast-In, Extruded Anchor
BSTSB-L1.875D	1-7/8"	Long Nose	Drilled Hole, Mech. Fastened
BSTSB-A1.875D	1-7/8"	Angled - Long Nose	Drilled Hole, Mech. Fastened
BSTSB-C3E	3"	Short Nose	Cast-In, Extruded Anchor
BSTSB-C3D	3"	Short Nose	Drilled Hole, Mech. Fastened

MODELS

MODEL	WIDTH	TREAD	INSTALL
BSTSB-P3E	3"	Short Tipped Nose	Cast-In, Extruded Anchor
BSTSB-L3E	3"	Long Nose	Cast-In, Extruded Anchor
BSTSB-L3D	3"	Long Nose	Drilled Hole, Mech. Fastened
BSTSB-A3E	3"	Angled - Long Nose	Cast-In, Extruded Anchor
BSTSB-A3D	3"	Angled - Long Nose	Drilled Hole, Mech. Fastened
BSTSB-C4E	4"	Short Nose	Cast-In, Extruded Anchor
BSTSB-C4D	4"	Short Nose	Drilled Hole, Mech. Fastened
BSTSB-P4E	4"	Short Tipped Nose	Cast-In, Extruded Anchor

Full Abrasive

STAIR TREAD + NOSING

A full abrasive stair tread is made from an extruded aluminum base with abrasive material locked into the extruded channels. The material is consistent throughout the tread covering the nose. Ideal for interior and exterior applications, the full abrasive tread is easy to install and an economical option.



FEATURES

ANTI-SLIP SAFETY TREADS Reduce slip hazards with ADA and OSHA compliant abrasive stair treads. Abrasive treads provide a high coefficient of friction.

CONTINUOUS COLOR No need to worry about walking off the color as the abrasive material filler is dyed throughout.

BARRIER FREE The solid, rounded edge abrasive nosings conform to OSHA's barrier free code for stairs.

DETAILS

CHANNEL Extruded Aluminum

APPLICATION Poured Concrete, Steel Pan, Terrazzo or Wood

TREAD Full Abrasive

WIDTH 2, 2-1/8, 3, 3-1/8, 4 or 4-1/8 inches

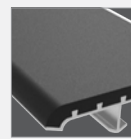
MOUNTING Anchor or Drilled Holes, Mech. Fastened

NOSING Short, Short-Tipped or Long

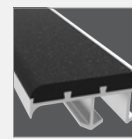
OPTIONS Photoluminescent, Mitered Cuts, Painted Undersides or Taped Tops

COMPLIANCE ADA and California Title 24, Section 3306

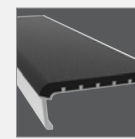
NOSING



Short

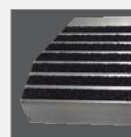


Short-Tipped

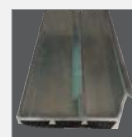


Long

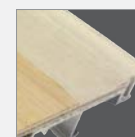
OPTIONS



Mitered Cuts



Painted Undersides



Taped Tops

SHORT NOSE MODELS

MODEL	WIDTH	INSTALL
BSTSF-C2.125E	2-1/8"	Cast-In, Extruded Anchor
BSTSF-C2.125D	2-1/8"	Drilled Hole, Mech. Fastened
BSTSF-C3.125E	3-1/8"	Cast-In, Extruded Anchor
BSTSF-C3.125D	3-1/8"	Drilled Hole, Mech. Fastened
BSTSF-C4E	4"	Cast-In, Extruded Anchor
BSTSF-C4D	4"	Drilled Hole, Mech. Fastened

LONG NOSE MODELS

MODEL	WIDTH	INSTALL
BSTSF-L2.125E	2-1/8"	Cast-In, Extruded Anchor
BSTSF-L2.125D	2-1/8"	Drilled Hole, Mech. Fastened
BSTSF-L3.125E	3-1/8"	Cast-In, Extruded Anchor
BSTSF-L3.125D	3-1/8"	Drilled Hole, Mech. Fastened
BSTSF-L4.125E	4-1/8"	Cast-In, Extruded Anchor
BSTSF-L4.125D	4-1/8"	Drilled Hole, Mech. Fastened

SHORT TIPPED NOSE MODELS

MODEL	WIDTH	INSTALL
BSTSF-P2E	2"	Cast-In, Extruded Anchor
BSTSF-P3E	3"	Cast-In, Extruded Anchor
BSTSF-P4E	4"	Cast-In, Extruded Anchor

Inset

STAIR TREAD + NOSING

Babcock-Davis' Inset Treads and Nosings are an ideal solution for walkways, ramps, landings and stair treads that require a strip of anti-slip abrasive material. The inset treads are available in bar or full abrasive.



FEATURES

RAMPS & WALKWAYS Inset treads and nosings are the ideal solution for providing an anti-slip surface. Install on ramps, walkways, platforms and stairs on most surfaces.

ANTI-SLIP SAFETY TREADS Reduce slip hazards with ADA and OSHA compliant abrasive stair treads. Abrasive treads provide a high coefficient of friction.

CONTINUOUS COLOR No need to worry about walking off the color as the abrasive material filler is dyed throughout.

DETAILS

CHANNEL Extruded Aluminum

APPLICATION Poured Concrete, Steel Pan, Terrazzo or Wood

TREAD Ribbed Abrasive or Full Abrasive

WIDTH 1-3/8, 2-1/4 or 3 inches

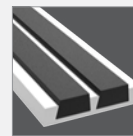
MOUNTING Anchor or Drilled Holes, Mech. Fastened

NOSING None

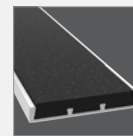
OPTIONS Photoluminescent, Vision Line, Mitered Cuts, Painted Undersides or Taped Tops

COMPLIANCE ADA and California Title 24, Section 3306

TREAD

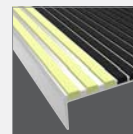


Ribbed Abrasive

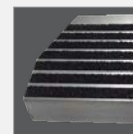


Full Abrasive

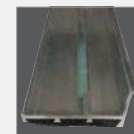
OPTIONS



Vision Line



Mitered Cuts



Painted Undersides



Taped Tops

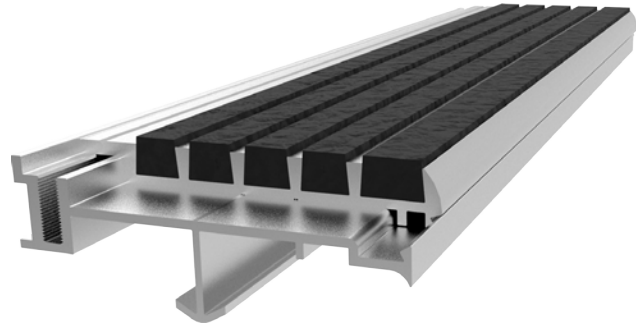
MODELS

MODEL	WIDTH	TREAD	INSTALL
BSTSB-N1.375D	1-3/8"	Ribbed Abrasive	Drilled Hole, Mech. Fastened
BSTSB-N1.375E	1-3/8"	Ribbed Abrasive	Cast-In, Extruded Anchor
BSTSF-N2.25D	2-1/4"	Full Abrasive	Drilled Hole, Mech. Fastened
BSTSF-N2.25E	2-1/4"	Full Abrasive	Cast-In, Extruded Anchor
BSTSB-N3D	3"	Ribbed Abrasive	Drilled Hole, Mech. Fastened
BSTSB-N3E	3"	Ribbed Abrasive	Cast-In, Extruded Anchor

Two-Part

STAIR TREAD + NOSING

Save the life of your stair nosings during construction. Babcock-Davis' Two-Part Stair Treads and Nosings are designed to save your stair treads and nosings from damage during the construction process. The sub-channel and plywood inserts are installed during the construction phase. When the building is near completion, the temporary plywood tread is replaced with the final install of the abrasive anti-slip safety material.



FEATURES

EASY TREAD REPLACEMENT Easily replace worn or damaged treads by unscrewing the existing tread, slide the new one in and fasten to the base.

CONTINUOUS COLOR No need to worry about walking off the color as the abrasive material filler is dyed throughout.

DETAILS

CHANNEL Extruded Aluminum

APPLICATION Poured Concrete, Steel Pan or Terrazzo

TREAD Ribbed Abrasive or Full Abrasive

WIDTH 3-3/8 Inches

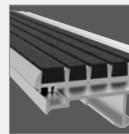
MOUNTING Anchor or Drilled Holes, Mech. Fastened

NOSING Short-Tipped

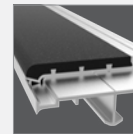
OPTIONS Photoluminescent, Vision Line, Mitered Cuts, Painted Undersides or Taped Tops

COMPLIANCE ADA and California Title 24, Section 3306

TREAD

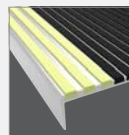


Ribbed Abrasive

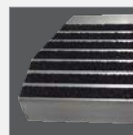


Full Abrasive

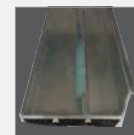
OPTIONS



Vision Line



Mitered Cuts



Painted Undersides



Taped Tops

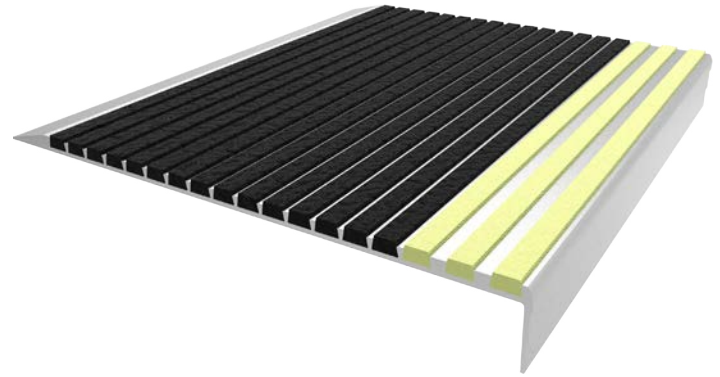
MODELS

MODEL	WIDTH	TREAD	WIDTH	INSTALL
BSTTB-3.375E	3-3/8"	Ribbed Abrasive	3-3/8"	Extruded Anchor
BSTTB-3.375D	3-3/8"	Ribbed Abrasive	3-3/8"	Drilled Hole, Mech. Fastened
BSTTF-3.375E	3-3/8"	Full Abrasive	3-3/8"	Extruded Anchor
BSTTF-3.375D	3-3/8"	Full Abrasive	3-3/8"	Drilled Hole, Mech. Fastened

Renovation

STAIR TREAD + NOSING

Give your tired stairs a face lift...
 Manufactured with the same material as our bar and full abrasive stair treads and nosings, Babcock-Davis' renovation treads are designed for restoration of all stair types. The renovation stair treads are a quick and economical alternative to new construction and provide a safe, non-slip surface.



FEATURES

LARGEST TREAD SURFACE Designed to cover more of your stair, these tread surfaces cover up to 11" providing ultimate anti-slip safety and protection.

CONTINUOUS COLOR No need to worry about walking off the color as the abrasive material filler is dyed throughout.

DETAILS

CHANNEL Extruded Aluminum

APPLICATION Poured Concrete, Sloped, Steel Pan, Terrazzo or Wood

TREAD Ribbed Abrasive

WIDTH 4, 5, 9 or 11 Inches

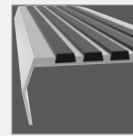
MOUNTING Drilled Holes, Mech. Fastened

NOSING Rounded, Long or Angled-Long

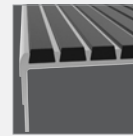
OPTIONS Photoluminescent, Vision Line, Mitered Cuts, Painted Undersides or Taped Tops

COMPLIANCE ADA and California Title 24, Section 3306

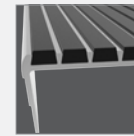
NOSING



Rounded

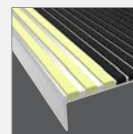


Long

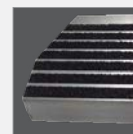


Angled-Long

OPTIONS



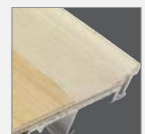
Vision Line



Mitered Cuts



Painted Undersides



Taped Tops

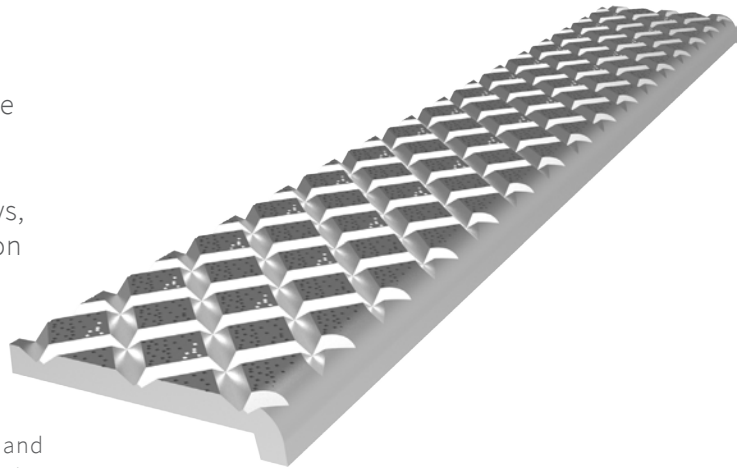
MODELS

MODEL	WIDTH	NOSING	INSTALL
BSTRB-V4D	4"	Rounded Nose	Drilled Hole, Mech. Fastened
BSTRB-L5D	5"	Long Nose	Drilled Hole, Mech. Fastened
BSTRB-L9D	9"	Long Nose	Drilled Hole, Mech. Fastened
BSTRB-L11D	11"	Long Nose	Drilled Hole, Mech. Fastened
BSTRB-A5D	5"	Angled Nose	Drilled Hole, Mech. Fastened
BSTRB-A9D	9"	Angled Nose	Drilled Hole, Mech. Fastened
BSTRB-A11E	11"	Angled Nose	Drilled Hole, Mech. Fastened

Cast

STAIR TREAD + NOSING

Babcock-Davis' cast aluminum stair treads are made from type 319 aluminum with a perfect sand cast finish. Ideal for heavy traffic areas such as schools, public buildings and subways, these stair treads are built to last. Our cast iron treads are a dark gray cast iron designed for interior and exterior use.



FEATURES

HIGHLY DURABLE These treads will take a beating and keep performing; designed to be impact resistant with anti-slip grit and are barrier free.

ANTI-SLIP SAFETY TREADS Reduce slip hazards with ADA and OSHA compliant abrasive stair treads. The cross hatch treads with abrasive grit provides a high coefficient of friction.

DETAILS

MATERIALS Aluminum or Iron

APPLICATION Poured Concrete or Steel Pan

TREAD Cross Hatch with Abrasive Grit

WIDTH 2, 3 or 4 inches

MOUNTING Cast-In Bolt or Wing Nut with Drilled Holes

NOSING Short, Short-Tipped or Long

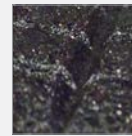
OPTIONS Mitered Cuts, Painted Undersides or Taped Tops

COMPLIANCE ADA and California Title 24, Section 3306

MATERIAL



Cast Aluminum



Cast Iron

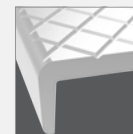
NOSING



Short



Short-Tipped



Long

SHORT NOSE MODELS

MODEL	WIDTH	MATERIAL	INSTALL
BSTCA-C2W	2"	Aluminum	Wing Nut
BSTCA-C2C	2"	Aluminum	Cast-In Bolt
BSTCA-C3W	3"	Aluminum	Wing Nut
BSTCA-C3C	3"	Aluminum	Cast-In Bolt
BSTCI-C3W	3"	Iron	Wing Nut
BSTCA-C4W	4"	Aluminum	Wing Nut
BSTCA-C4C	4"	Aluminum	Cast-In Bolt
BSTCI-C4W	4"	Iron	Wing Nut

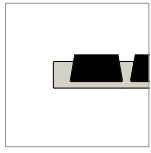
SHORT TIPPED NOSE MODELS

MODEL	WIDTH	MATERIAL	INSTALL
BSTCA-P2W	2"	Aluminum	Wing Nut
BSTCA-P2C	2"	Aluminum	Cast-In Bolt
BSTCA-P3W	3"	Aluminum	Wing Nut
BSTCA-P3C	3"	Aluminum	Cast-In Bolt
BSTCI-P3W	3"	Iron	Wing Nut
BSTCA-P4W	4"	Aluminum	Wing Nut
BSTCA-P4C	4"	Aluminum	Cast-In Bolt
BSTCI-P4W	4"	Iron	Wing Nut

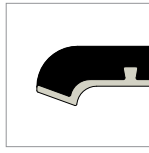
LONG NOSE MODELS

MODEL	WIDTH	MATERIAL	INSTALL
BSTCA-L3W	3"	Aluminum	Wing Nut
BSTCA-L3C	3"	Aluminum	Cast-In Bolt
BSTCI-L3W	3"	Iron	Wing Nut
BSTCA-L4W	4"	Aluminum	Wing Nut
BSTCA-L4C	4"	Aluminum	Cast-In Bolt
BSTCI-L4W	4"	Iron	Wing Nut

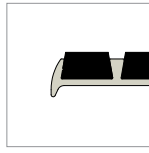
Nosing Options



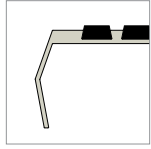
None



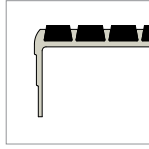
Short



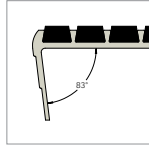
Short-Tipped



Rounded



Long



Angled Long

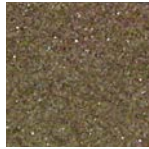
Abrasive Color Options



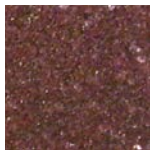
Black*



Gray



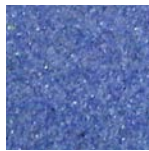
Brown



Burgundy



Green



Blue



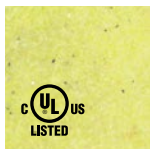
Red



Buff



Yellow



Photoluminescent

UL listed luminous egress-path marking system SA33914

Colors shown give only an indication of shade. Samples are available upon request.

Custom abrasive colors available, call 888.412.3726 for more information.

Material Options



Mill Finish Aluminum

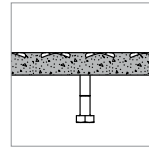


319 Cast Aluminum

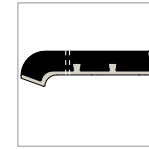


Cast Iron

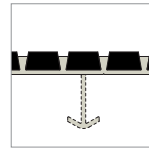
Mounting Options



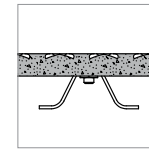
Cast-in Bolt



Drilled Holes

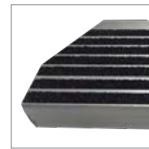


Extruded Anchor



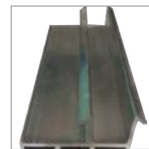
Wing Nut

Additional Options



CUSTOM CUTS

Mitered cuts, notches, handrails and other custom cuts available.



PAINTED UNDERSIDES

Prevents a reaction between the stair treads and concrete where they come into contact with each other.



REPAIR KITS

Used only for aesthetic repairs or small holes. Includes abrasive material and epoxy resin.



TAPED TOPS

Provide protection of exposed surfaces during installation to prevent overspill from pouring concrete.



 **babcockdavis**

9300 73RD AVENUE NORTH
BROOKLYN PARK, MN 55428

(888) 412-3726
(888) 312-3726 FAX

WWW.BABCOCKDAVIS.COM