



# Wall + Door Protection

10 2600 | PRODUCT CATALOG



Great Products.  
Better Partners.



Great Products.  
Better Partners.



## ROOF HATCH + SMOKE VENT

07 7200



## ACCESS DOORS

08 3100



## FLOOR DOORS

08 3483



## STAIR TREADS + NOSINGS

05 5000



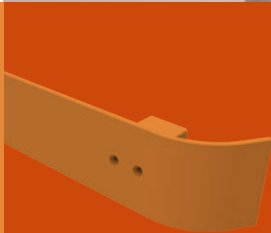
## ENTRANCE MATS + GRILLES

12 4813 / 12 48 16



## FIRE PROTECTION SPECIALTIES

10 4413 / 10 4416



## WALL + DOOR PROTECTION

10 2600



# Protecting People + Buildings

## Wall + Door Protection

### **CORNER GUARDS** 5-7

Stainless Steel	5
Vinyl Surface Mount	6
Vinyl Recess Mount	6
Extruded Vinyl	7
Lexan	7
Vinyl Door Frame Guards	7

### **CRASH RAILS** 8-9

Stainless Steel	8
Aluminum	8
Vinyl	9

### **BUMPER GUARDS** 10

Vinyl	10
Vinyl Rub Rail	10

### **HANDRAILS** 11-12

Round	11
Standard Crash Resistant	11
Vinyl Thumb Grip Handrail	12
Accent Strip Handrail	12

### **WALL COVERINGS** 13

Stainless Steel	13
Vinyl	13

## Options

Vinyl Colors	14
Stainless Steel Patterns	15

More than a source for your  
commercial building products...

# A Partnership

Dear Partner,

Thank you for your continued confidence in Babcock-Davis. On behalf of the entire company, I can tell you that we are motivated and inspired from our partnership. Working with you to deliver commercial building products and services that exceed your expectations is our top priority.

For over 100 years, we have remained dedicated to building and designing the highest quality commercial building products. Our product offering and manufacturing capabilities have grown significantly over the years thanks to the quality commitment of our many hard working employees in Minnesota. We proudly stand behind every product that we ship out every day and around the world.

Sourcing commercial building products is never as simple as it seems. This is particularly true when it comes to the type of specialty and architectural building products that we supply. It takes a collaborative effort of resources and information to get the job done right. We understand all the complexities and time sensitivities involved. This is why we have built such a strong network of people and processes to better serve all of you, our partners. We do so with flexibility and nimbleness that fit your objectives-not ours.

We are excited for the future and the opportunity to work with you and to continue to exceed your expectations. You have our commitment that we will work hard every day to help you succeed.

If there is anything that we can do to improve our service to you, we will listen.

Sincerely,



Sue W. Thomas | CHIEF EXECUTIVE OFFICER

# Stainless Steel

## CORNER GUARD

Stainless steel corner guards offer a tough yet beautiful look to your building. A highly configurable product guarantees your needs will be met. Available in Type 304 or 430 stainless steel with a variety of patterns which are sure to enrich the quality and look of your building.

### FEATURES

**STANDARD CORNER GUARD** Protect any length of wall with an easy application.

**EMBOSSED PATTERNS** Designed with a modern and attractive appearance.

**EASY INSTALLATION** Surface and recess mount applications.



### DETAILS

**MATERIAL** Type 304, 316 or 430 Stainless Steel or 14 gauge Aluminum

**FINISH** #4 Satin or Embossed Pattern (see page 15)

**MOUNTING** Surface Mounted or Recessed

**MOUNTING METHOD** Mechanical or Adhesive

**SIZE** 1 inch, 2 inches, 3 inches or custom

**LENGTH** Continuous length up to 10 feet maximum

**CORNER ANGLE** 90°, 135° or Custom

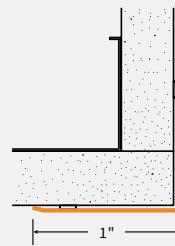
### MATERIALS



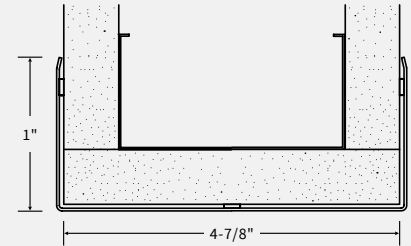
Stainless Steel



Aluminum



Corner Guard



End Wall

### ORDER GUIDE

MODEL	MATERIAL	MOUNTING	WING SIZE	CORNER	MOUNTING	OPTIONS
<b>BCG</b>						-
	<b>S</b> Stainless Steel, Type 304	<b>S</b> Surface	<b>1</b> 1"	<b>S</b> Square	<b>A</b> Adhesive	<b>D100</b> 100°
	<b>T</b> Stainless Steel, Type 430	<b>R</b> Recess	<b>2</b> 2"		<b>D</b> Drilled Holes & Hardware	<b>D135</b> 135°
	<b>A</b> 14 ga. Aluminum		<b>3</b> 3"			<b>CSH</b> Countersunk Holes & Hardware
						<b>G18</b> 18 Gauge

# Vinyl

## CORNER GUARDS

Babcock-Davis' Vinyl Corner Guards are an attractive and durable solution to unsightly, damaged corners. Backed by a limited five-year warranty, Babcock-Davis' Corner Guards are available in 50 colors, are Class A fire-rated and meet national building code standards.

### FEATURES

**NEW OR EXISTING CONSTRUCTION** Easily installed on new or existing walls.

**PVC FREE OPTION** Available with 2 inch or 3 inch standard corner guard.

**FIRE-RATED** Available with Class A or 2-Hour fire-rating.



### DETAILS

**MATERIAL** Vinyl

**FINISH** Pebble Grain Embossed

**MOUNTING** Surface Mounted or Recessed

**MOUNTING METHOD** Mechanical, Adhesive or Tape

**SIZE** 2 inch to 3 inches

**LENGTH** Up to 20 Linear Feet

**RETAINER** Continuous Aluminum

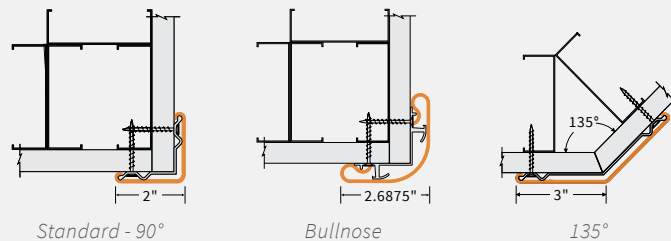
**CORNER ANGLE** 90° or 135°

**CORNER** Square or Bull Nose

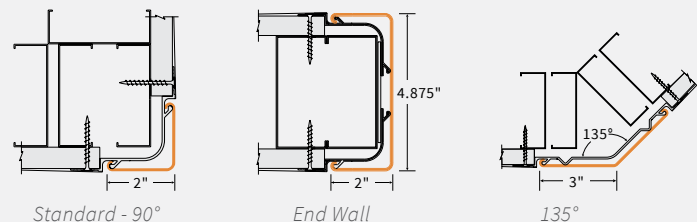
**CORNER RADIUS** 1/8 inch or 3/4 inch

**FIRE-RATING** Class A or 2-Hour (option)

### VINYL SURFACE MOUNT CORNER GUARDS



### VINYL RECESS MOUNT CORNER GUARDS



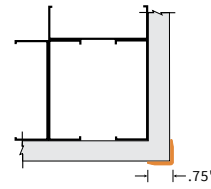
### ORDER GUIDE

MODEL	MATERIAL	MOUNTING	WING SIZE	CORNER	OPTIONS	ACCESSORIES
<b>BCG</b>					-	<b>EC</b> End Cap
	<b>V</b> Vinyl	<b>S</b> Surface	<b>2</b> 2"	<b>S</b> Square	<b>D135</b> 135°	
		<b>R</b> Recess	<b>26875</b> 2-11/16"	<b>B</b> Bull Nose		
		<b>F</b> Recess, 2-Hour Fire-Rated	<b>3</b> 3"			

# Extruded Vinyl

## CORNER GUARDS

Babcock-Davis' Extruded Vinyl Corner Guards are a durable solution to unsightly, damaged corners. This Corner Guard is Class A fire-rated and meets national building code standards.



### DETAILS

- MATERIAL** Extruded Vinyl
- FINISH** Pebble Grain Embossed
- MOUNTING** Surface Mounted
- MOUNTING METHOD** Adhesive or Tape
- SIZE** 3/4 inch to 2-1/2 inches
- LENGTH** 4, 8, 12 or 16 Linear Feet
- CORNER ANGLE** 90° or 135°
- FIRE-RATING** Class A

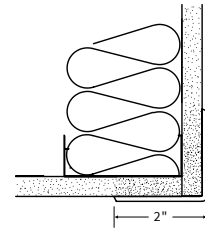
### ORDER GUIDE

MODEL	WING SIZE	CORNER	OPTIONS
<b>BCGVE</b>			-
	<b>75</b> 3/4"	<b>S</b> Square	<b>D135</b> 135°
	<b>15</b> 1-1/2"		<b>T</b> Tape
	<b>25</b> 2-1/2"		

# Lexan®

## CORNER GUARDS

Babcock-Davis' Lexan clear polycarbonate corner guards allow the color of your wall to show through. Our Lexan series is easily installed with simple self-tapping screws and available in a variety of sizes to meet any customer need.



### DETAILS

- MATERIAL** Clear Polycarbonate
- MOUNTING** Surface Mounted
- MOUNTING METHOD** Mechanical
- SIZE** 1 inch to 2-1/2 inches
- LENGTH** 4 or 8 Linear Feet
- CORNER ANGLE** 90° or 135°
- CORNER STYLE** Square

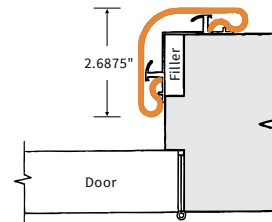
### ORDER GUIDE

MODEL	WING SIZE	CORNER	MOUNTING	OPTIONS
<b>BCGLS</b>				-
	<b>1</b> 1"	<b>S</b> Square	<b>D</b> Drilled Holes	<b>D135</b> 135°
	<b>1125</b> 1-1/8"			
	<b>2</b> 2"			
	<b>25</b> 2-1/2"			

# Vinyl Door

## CORNER GUARDS

Babcock-Davis' Vinyl Door Guards are designed with a 1-1/4 inch radius cover that is mounted over a continuous aluminum cover. The top and bottom caps "lock" the profile cover in place while the retainer can be modified to fit most door frame styles.



### DETAILS

- MATERIAL** Vinyl
- FINISH** Pebble Grain Embossed
- MOUNTING** Surface Mounted
- MOUNTING METHOD** Mechanical
- SIZE** 2-11/16 inches
- LENGTH** Up to 20 Linear Feet
- CORNER ANGLE** 90°
- CORNER STYLE** Bull Nose
- CORNER RADIUS** 1-1/4 inch

### ORDER GUIDE

MODEL	MATERIAL	MOUNTING	WING SIZE	ACCESSORIES
<b>BDG</b>				<b>EC</b> End Cap
	<b>V</b> Vinyl	<b>S</b> Surface	<b>26875</b> 2-11/16"	

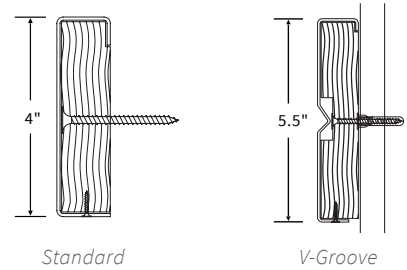
# Stainless Steel

## CRASH RAIL

Babcock-Davis' Stainless Steel Crash Rails offer a superior level of protection in high abuse areas. The stainless steel gives a high-tech appearance with industrial strength. Available in standard #4 satin finish or one of 11 embossed patterns. V-Groove available in 5-1/2 inch only.

### DETAILS

**MATERIAL** Stainless Steel  
**FINISH** #4 Satin or Embossed  
**MOUNTING** Surface  
**MOUNTING METHOD** Mechanical  
**SIZE** 4 inch or 5-1/2 inch  
**RETAINER** Continuous Wood



### ORDER GUIDE

MODEL	SIZE	WING SIZE	OPTIONS
<b>BCRSS</b>		-	
	4 4"	<b>BS</b> 2-3/4" Square Mounting Bracket	<b>VG</b> V-Groove
	55 5-1/2"	<b>B12</b> 2" I-Beam Mounting Bracket	
		<b>B13</b> 3" I-Beam Mounting Bracket	

ACCESSORIES
<b>EC</b> End Cap

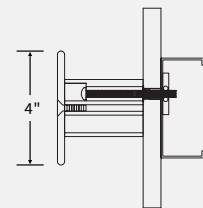
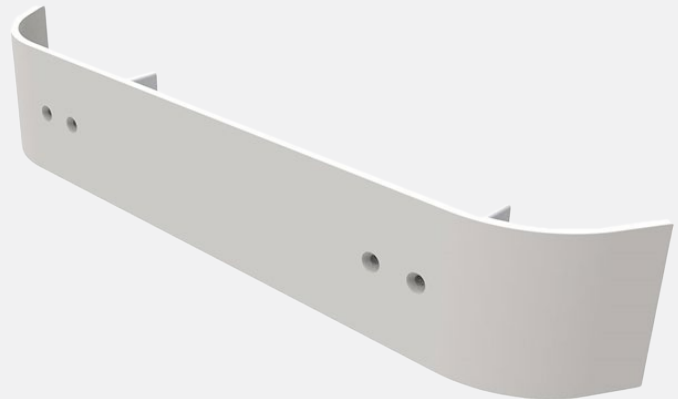
# Aluminum + Stainless Steel

## CRASH RAIL

Babcock-Davis' Aluminum and Stainless Steel Crash Rails are designed to protect your walls from carts and beds while providing a high-tech appearance.

### DETAILS

**MATERIAL** 6063-T5 Aluminum or Stainless Steel, Type 304  
**FINISH** Clear Anodized (Aluminum) or #4 Satin (Stainless Steel)  
**MOUNTING** Extended Mount  
**MOUNTING METHOD** Mechanical  
**SIZE** 4 inch



### ORDER GUIDE

MODEL	MATERIAL	OPTIONS
<b>BCR</b>		<b>E4</b> -
	<b>A</b> Aluminum	<b>BS</b> 2-3/4" Square Mounting Bracket
	<b>S</b> Stainless Steel	<b>B12</b> 2" I-Beam Mounting Bracket
		<b>B13</b> 3" I-Beam Mounting Bracket

ACCESSORIES
<b>EC</b> End Cap
<b>IC</b> Inside Corner
<b>OC</b> 90° Outside Corner



# Vinyl

## CRASH RAILS

Babcock-Davis' standard Vinyl Crash Rails protect walls from damage by carts and beds. Available in multiple sizes and options, and embossed pattern in 50 color options. See page



### FEATURES

**RUGGED DURABILITY** Protect any length of wall with versatile vinyl crash rails.

**EMBOSSED PATTERNS** Designed with a modern and attractive appearance.

**FIRE-RATED** Meets National Building Standards and is Class A fire-rated.



### DETAILS

**MATERIAL** Vinyl

**FINISH** Pebble Grain Embossed

**MOUNTING** Surface, Cushion or Extended

**MOUNTING METHOD** Mechanical

**SHAPE** Square or Crescent

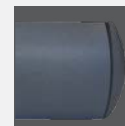
**SIZE** 4 inches, 5 inches, 6 inches, 7 inches or 8 inches

**RETAINER** Continuous Aluminum or Economy Clips

### SHAPE



Square



Crescent

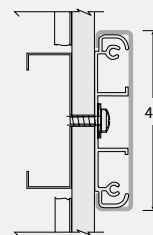
### OPTIONS



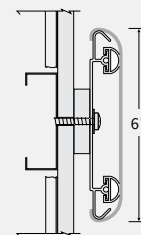
Accent Strip

### STANDARD

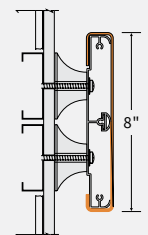
MODEL	MATERIAL	MOUNTING	SIZE	RETAINER	OPTIONS
<b>BCR</b>					-
	<b>V</b> Vinyl	<b>S</b> Surface <b>E</b> Extended	<b>4</b> 4" <b>6</b> 6" <b>8</b> 8"	<b>C</b> Continuous <b>E</b> Economy Clip	<b>AS</b> Accent Strip <b>B15</b> 1-1/2" Extended Bracket <b>C05</b> 1/2" Cushion Mount



Standard



Cushion



Extended Mount

### CRESCENT SHAPE

MODEL	MATERIAL	MOUNTING	SIZE	RETAINER	OPTIONS
<b>BCR</b>					-
	<b>V</b> Vinyl	<b>S</b> Surface <b>E</b> Extended	<b>5</b> 5" <b>7</b> 7"	<b>C</b> Continuous <b>E</b> Economy Clip	<b>AS</b> Accent Strip <b>B15</b> 1-1/2" Extended Bracket <b>C05</b> 1/2" Cushion Mount

### ACCESSORIES

- EC** End Cap
- SK** Splice Kit
- IC** Inside Corner
- OC** 90° Outside Corner

# Vinyl

## BUMPER GUARDS

Babcock-Davis' standard bumper guards are designed with rounded, full-length vinyl covers and continuous retainers. Meets national building code standards.

### DETAILS

**MATERIAL** Vinyl

**FINISH** Pebble Grain Embossed

**MOUNTING** Surface or Extended

**MOUNTING METHOD** Mechanical

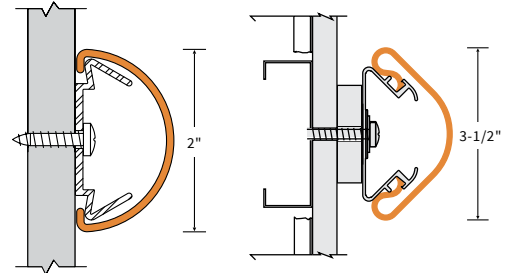
**SIZE** 2 inches or 3-1/2 inches

**SHAPE** Crescent

### RETAINER

- 2 inch: Plastic
- 3-1/2 inch: Continuous Aluminum

**FIRE-RATING** Class A



### ORDER GUIDE

MODEL	MOUNTING	SIZE	C	OPTIONS
<b>BBGV</b>			<b>C</b>	-
	<b>S</b> Surface Mount	<b>2</b> 2"		<b>B15</b> 1-1/2" Extended Mount
	<b>E</b> Extended Mount	<b>35</b> 3-1/2"		<b>C05</b> 1/2" Cushion Mount

ACCESSORIES
<b>EC</b> End Cap
<b>SK</b> Splice Kit
<b>OC</b> 90° Outside Corner

# Vinyl Rub Rail

## BUMPER GUARDS

Babcock-Davis' Rub Rail Bumper Guard is designed with an integrally colored flexible vinyl insert into a continuous aluminum retainer channel. Meets national building code standards.

### DETAILS

**MATERIAL** Vinyl

**FINISH** Pebble Grain Embossed

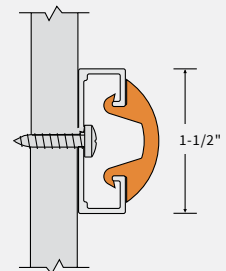
**MOUNTING** Surface

**MOUNTING METHOD** Mechanical

**SIZE** 1-1/2 inch

**RETAINER** Continuous Aluminum

**FIRE-RATING** Class A



### ORDER GUIDE

MODEL		OPTIONS
<b>BBGVS15C</b>	-	<b>RF</b>
		<b>BL</b> Black Retainer Finish
		<b>BR</b> Bronze Retainer Finish
		<b>M</b> Mill Retainer Finish*

ACCESSORIES
<b>EC</b> End Cap
<b>SK</b> Splice Kit
<b>OC</b> 90° Outside Corner

# 1-1/2" Round

## VINYL HANDRAIL

Babcock-Davis' 1-1/2 inch diameter Round Handrail is constructed of a continuous aluminum retainer. An embossed vinyl cover encases the retainer. This standard handrail is Class A fire-rated and meets national building code standards.

### DETAILS

**MATERIAL** Vinyl

**FINISH** Pebble Grain Embossed

**MOUNTING** Mounting Bracket

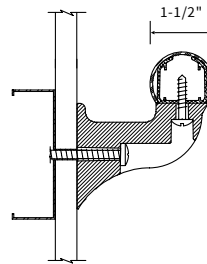
**MOUNTING METHOD** Mechanical

**SIZE** 1-1/2 inches

**SHAPE** Round

**RETAINER** Continuous Aluminum

**FIRE RATING** Class A



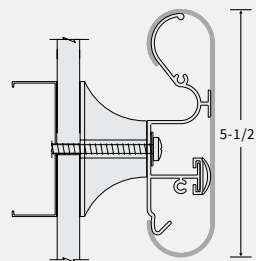
### ORDER GUIDE

MODEL	ACCESSORIES
<b>BHRVE15C</b>	-
	<b>EC</b> End Cap
	<b>SK</b> Splice Kit
	<b>LR</b> Left Return
	<b>RR</b> Right Return
	<b>IC</b> Inside Corner
	<b>OC</b> 90° Outside Corner

# 5-1/2" Standard

## HANDRAIL WITH CRASH RESISTANCE

Babcock-Davis' Standard 5-1/2 inch Handrail is constructed to withstand impact with built-in crash protection. The sturdy mounting brackets maintain wall clearance and stability while providing support in medium- to high-impact areas. End and corner caps are available as semi-rigid plastic. Optional reveals provide additional design options.



### DETAILS

**MATERIAL** Vinyl

**FINISH** Pebble Grain Embossed

**MOUNTING** Extended

**MOUNTING METHOD** Mechanical

**SIZE** 5-1/2 inches

**RETAINER** Continuous Aluminum

**FIRE RATING** Class A

### OPTIONS



*Accent Strip*

### ORDER GUIDE

MODEL	OPTIONS	ACCESSORIES
<b>BHRVE55C</b>	-	<b>SK</b> Splice Kit
	<b>AS</b> Accent Strip	<b>LR</b> Left Return
		<b>RR</b> Right Return
		<b>IC</b> Inside Corner
		<b>OC</b> 90° Outside Corner

# 5-1/2" Thumb Grip

## VINYL HANDRAIL

Babcock-Davis' 5-1/2 inch Thumb Grip Handrail is constructed with a full-length vinyl bumper and a continuous aluminum retainer. Available in over 50 colors to match your building aesthetics along with optional black reveals at end and corner caps.



### DETAILS

**MATERIAL** Vinyl

**FINISH** Pebble Grain Embossed

**MOUNTING** Extended

**MOUNTING METHOD** Mechanical

**SIZE** 5-1/2 inches

**SHAPE** Irregular

**RETAINER** Continuous Aluminum

**FIRE RATING** Class A

### ORDER GUIDE

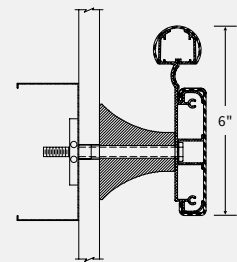
MODEL		
BHRVE55C	-	TG

ACCESSORIES
SK Splice Kit
LRT Left End Return with Reveal
RRT Right End Return with Reveal
ICT Inside Corner with Reveal
OCT 90° Outside Corner with Reveal
OCT135 135° Outside Corner with Reveal

# 6" Accent Strip

## HANDRAIL WITH THUMB GRIP

Babcock-Davis' 6 inch Accent Strip Handrail with a thumb grip is constructed to withstand impact with built in crash protection. Designed with sturdy mounting brackets to maintain wall clearance and stability while providing support in medium- to high-impact areas. This three piece vinyl handrail allows for hundreds of color combinations while providing durable, attractive aesthetics.



### DETAILS

**MATERIAL** Vinyl

**FINISH** Pebble Grain Embossed

**MOUNTING** Extended

**MOUNTING METHOD** Mechanical

**SIZE** 6 inch

**SHAPE** Irregular

**RETAINER** Continuous Aluminum

**FIRE RATING** Class A

### ORDER GUIDE

MODEL	ACCESSORIES	
BHRVE6C	-	
		SK Splice Kit
		LR Left Return
		RR Right Return
		IC Inside Corner
		OC 90° Outside Corner

# Stainless Steel

## WALL COVERING

Babcock-Davis' Architectural Stainless Steel Wall Covering can be used in a wide variety of applications. This sturdy wall covering is available in various thicknesses and 10 embossed patterns, or a classy satin finish. These metal sheets can be added to walls, doors, and cabinetry in virtually any facility.



### DETAILS

**MATERIAL** 16 Gauge Type 304 Stainless Steel

**FINISH** #4 Satin or Embossed

**MOUNTING** Surface

**MOUNTING METHOD** Mechanical

### SIZE

- 4 feet by 8 feet
- 4 feet by 10 feet

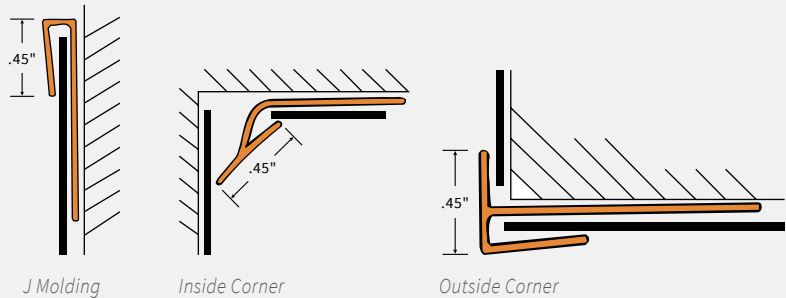
### ORDER GUIDE

MODEL	THICKNESS	SIZE	OPTIONS
<b>BWCS</b>			-
	<b>16</b> 16 Gauge	<b>S4X8</b> 4" x 8" Sheet	<b>DHS</b> Drilled Holes & Hardware
	<b>18</b> 18 Gauge	<b>S4X10</b> 4' x 10' Sheet	<b>DHC</b> Countersunk Holes & Hardware
	<b>14</b> 14 Gauge		

# Vinyl

## WALL COVERING

Babcock-Davis' Vinyl Wall Covering can be used in a wide variety of applications. This sturdy wall covering is available various thicknesses and 50 color options with a classic pebble grain embossed pattern.



### DETAILS

**MATERIAL** Vinyl

**FINISH** Haircell embossed

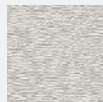
**MOUNTING** Surface

**MOUNTING METHOD** Adhesive

### SIZE

- 4 feet by 8 feet
- 4 feet by 10 feet

### MATERIAL



Vinyl

### ORDER GUIDE

MODEL	THICKNESS	SIZE	ACCESSORIES
<b>BWCV</b>			-
	<b>028</b> .028"	Sheet	Trim Molding
	<b>040</b> .040"	<b>S4X8</b> 4" x 8" Sheet	<b>MJM</b> J-Molding
	<b>060</b> .060"	<b>S4X10</b> 4' x 10' Sheet	<b>MIC</b> Inside Corner Molding
		Roll	<b>MOC</b> Outside Corner Molding
		<b>R4X120</b> 4" x 120"	<b>MDB1</b> Divider Bar - .028" and .04" thickness only
			<b>MDB2</b> Divider Bar - .05", .06" and .08" thickness only
			<b>CMC</b> Color Match Caulk
			<b>HPROLLER</b> Heavy Pressure Roller
			Adhesives
			<b>ADF1</b> #M Fastbond Contact Cement (1 Gallon)
			<b>ADF5</b> #M Fastbond Contact Cement (5 Gallon)
			<b>ADM1</b> Super Tek XT-2000 Mastic (1 Gallon)
			<b>ADM5</b> Super Tek XT-2000 Mastic (5 Gallon)
			<b>ADSL</b> Spray Lock Adhesive (22 oz Can)
			Substrate Sealer
			<b>DS1</b> Dry-Seal Substrate Sealer (1 Gallon)
			<b>DS55</b> Dry-Seal Substrate Sealer (5 Gallon)

# Vinyl COLOR OPTIONS



White



Linen



Cream



Delicate White



Pearl



Ivory



Tan



Dark Cream



Peach



Wheat



Beige



Silk



Bamboo



Cashmere



Suede



Sand



Mocha



Brown



Toffee



Tucson



Oyster



Shark



Khaki



Soda



Pumice



Mist



Tumbleweed



Gravity



Fudge



Caramel



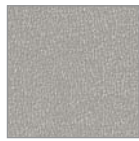
Nutmeg



Coffee



Stone



Lava



Soap



Landscape



Sea Green



Sage



Dew



Air



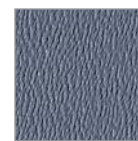
Aqua



Sky



Rain



Dark Blue



Navy



Fog



Dark Stone



Gray



Charcoal



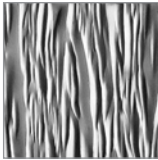
Black

Colors shown give only an indication of shade. Samples are available upon request.

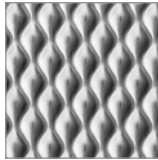
# Stainless Steel

## PATTERN OPTIONS

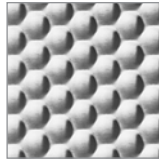
The #4 satin finish comes standard in 16 gauge thickness for both Type 304 and 430 stainless steel. Embossed stainless steel is available in Type 304 stainless. Thickness varies depending on the pattern.



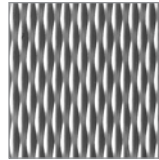
Wave



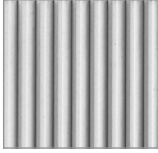
Bounce



Honeycomb



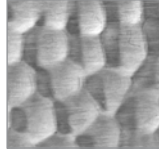
Rice



Pinstripe



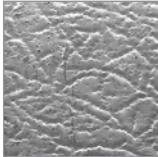
Cobblestone



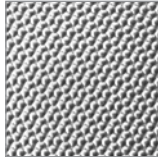
Hammered



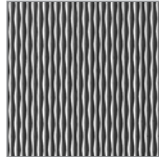
#4 Satin



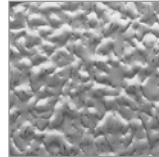
Leather



Pebble



Basket Weave



Stucco



 **babcockdavis**

9300 73RD AVENUE NORTH  
BROOKLYN PARK, MN 55428

(888) 412-3726  
(888) 312-3726 FAX

[WWW.BABCOCKDAVIS.COM](http://WWW.BABCOCKDAVIS.COM)